



## Gin Gin Neighbourhood Centre Community Care Newsletter

December 2023 - January 2024



4 Dear St Gin Gin Q 4671

4130 4630

ggnc@bundaberg.qld.gov.au



# Gin Gin Neighbourhood Centre

## Message from the Mayor:

With Christmas Day only a few short weeks away, and as we dawn on a new year, I would like to thank the Bundaberg Region community for another fantastic year.

As we enter the festive season, I encourage residents to check in on your neighbours with kindness and compassion, especially those who may not have family and friends nearby, and those who need a little extra support.

Council is again coordinating the Mayor's Christmas Cheer Appeal to raise funds to buy food to make hampers for local residents who need a helping hand to help make their Christmas special.

If you would like to learn more, or donate, visit: [ourbundabergregion.com.au/christmas-cheer-appeal](http://ourbundabergregion.com.au/christmas-cheer-appeal)

I wish everyone in the Bundaberg Region a very Merry Christmas and a Happy New Year, and may you have a season filled with love and joy with friends and family.

**All the best,**

**Mayor Jack Dempsey**



## Message from the Neighbourhood Centre Team:

It's been wonderful to see so many community connections happening at Gin Gin Neighbourhood Centre this year. We invite everyone to pop in and see our "Country Hoedown" Christmas display. Bring your little ones to have their photos taken while you enjoy a cuppa, a chat or use our free computers and WIFI.

Stay up to date with all that's happening in the community by checking out our Gin Gin Neighbourhood Facebook page and Community Directories.

Our Neighbourhood Team, Jen, Amber, Miranda and Sandi, wish you all a happy and safe festive season. We are excited about bringing in the New Year and look forward to seeing you all again in 2024.

## Staff in the Spotlight — Shayla



Hi, My name is Shayla. I am a community carer, new to the hinterland region and thought I would introduce myself. My family and I have recently moved from the Gold Coast to make Bundaberg our new home.

I will be working in the Gin Gin and Childers areas along with Gracie Dixon for community care and respite services. I am enjoying my new position and the community and staff have been so welcoming and supportive. I look forward to seeing you all around and making a positive impact on my clients and community.

**Branch Manager Community Services:**

Kirstin Harrison

**Neighbourhood Centre Community Development Officer:**

Jen Campbell

**Neighbourhood Centre Support Officers:**

Amber Larsen & Miranda Card

**Community Connect Worker:**

Fiona McLean

**Relief Neighbourhood Centre Support Officer:**

Sandi Reeve

Funded by





## Merry Christmas & Happy New Year from our Hub Staff & Volunteers



### Christmas Closure

Close 4.45pm Friday **22 December 2023**

Re-open 8.15am Tuesday **2 January 2024**

*For any emergencies please call Council's Call Centre on 1300 883 699*



## Free community support

### Emergency Relief Program



#### Experiencing crisis or hardship?

Emergency Relief assists those in the local community who find themselves in a crisis. If you are struggling for any reason; phone the Gin Gin Neighbourhood Centre on 4130 4630 and the friendly staff will assist you with reviewing your needs and eligibility.



### Looking for a JP in Gin Gin?

'JP's in the Community', provide JP Services at the Gin Gin Community Hub on Wednesdays and Fridays from 1—3pm.

If you're in need of a JP, pop into the Hub on the set days and times and see Terry or one of the other volunteers to utilise this FREE service.



#### Community Food Pantry

We need your help!

The Gin Gin community is experiencing the higher cost of living pressures. You can help by donating any new or unwanted (unopened) non-perishable food items to the Gin Gin Community Food Pantry. All donations are greatly appreciated!



## Free Community Support

### Gin Gin Neighbourhood Centre Christmas Hamper Donations

Are you looking for a way to help those in your community who are finding it stressful keeping the joy during this festive time? Drop in some donations to the box in the Gin Gin Community Hub or Gin Gin IGA.

Thank you to Gin Gin IGA for their generous donation to this cause.



Community Christmas Appeal

Donations accepted until 8 December 2023

Each year the Gin Gin Neighbourhood Centre works with the community to delivery **Christmas Hampers to those who need a helping hand.**

As part of the **Mayor's Christmas Cheer Appeal**, the Centre is seeking extra support this year from the community for donations of non-perishable food and/or small gifts which can be left at the Gin Gin Community Hub.

**Members of the community can nominate a family in need or nominate themselves to receive a Christmas Hamper** by collecting a form from the Centre or by downloading the form from [bundaberg.qld.gov.au](http://bundaberg.qld.gov.au)

***Not all nominated families are guaranteed a Hamper.***

### Farewell and Thank You Brian



The Neighbourhood Centre provides free support with technology help and learning basic computer skills with one-on-one support. Sadly, our present Volunteer Brian is leaving the area and we are planning to train up a new Volunteer to deliver this service. We wish Brian all the best for the future and thank him for his valuable help. Book at the front counter or phone the Centre on 4130 4630 if you wish to make a booking for assistance.

#### Available Hours

Monday 9am–2pm  
Tuesday 9am–2pm  
Wednesday 9am–2pm

### Christmas Lights for Gin Gin Competition

To enter Gin Gin Chamber of Commerce's Christmas Light Display Competition, pop into the Hub and pick up an entry form. Prizes for 1st \$200 voucher; 2nd \$150 voucher and 3rd \$100 voucher. Entries close 11 December, Judging 14th or 15th December. 1 Entry per property—Drop entries at the Hub!

People's Choice—residents can vote for their favourite business Christmas Display by popping into the Hub and telling Reception Staff their vote!



## Free social programs, projects and events

**Craft & Chat's** last FREE craft workshop for the year is on Monday **18 December**. Sessions recommence on **8 January 2024**. New members are always welcome!



Our FREE **Tai Chi** classes finish for the year on Monday **4 December** at the Youth Centre & are closed over the festive season, recommencing on **15 January 2024**.



**Cards 'n All** are held Monday afternoons and Tuesday mornings at the Hub. Their last session for 2023 will be on **19 December**. Sessions recommence again on **2 January 2024**.



**Balanced Bodies Pilates's** last FREE class for the year is on Wednesday **6 December** from 1.45–2.45pm. Classes recommence on **3 January 2024**.



### **Mel's Crafter in Residence Craft & Chat**

Last Workshop for the year—Christmas Cookie Decorating will be held at the Hub on Monday **11 December**.



### **Wide Bay Burnett Community Legal Service**

Wide Bay Burnett Community Legal Service are now coming to Gin Gin Community Hub Monday afternoons fortnightly for appointments only. Contact 4194 2663 to book an appointment for Free Legal Advice.

Gin Gin Community Hub will be **closed** on Friday **26 January 2024** for Australia Day.





## Upcoming Events & Support



Gin Gin Community Christmas Lunch

Friday 15 December 2023

**Date:** Friday 15 December 2023  
**Time:** Doors open 11am for 11.30am starting time  
**Where:** Gin Gin Neighbourhood Centre, HH Innes Room  
**Cost:** \$22.00 person  
**RSVP:** Monday 11 December 2023  
**Contact:** 4130 4630 or [ggnc@bundaberg.qld.gov.au](mailto:ggnc@bundaberg.qld.gov.au)

Everyone is invited to celebrate the festive season with a community Christmas lunch and activities.

Enjoy Christmas music, games, have some jolly fun and make some new friends too.

Plated cold meats and salad along with a dinner roll and delicious desserts will be served as a 2-course alternate drop.



## Community Connect services

Gin Gin Neighbourhood Centre

Finding your way through the process of planning and connecting with services can be **challenging and time consuming.**

If you need support with this, the Community Connect Worker can assist with case coordination to ensure you get referrals to the right service at the right time.

### A Community Connect Worker can help you:

- \* Assess support options
- \* Connect with services
- \* With Referrals to appropriate services
- \* Build your skills and confidence
- \* Present you with options/referrals about service providers in the region
- \* Liaise with service providers, to assist with appropriate referral and connections
- \* Link you with supports—occupational therapy, speech therapy, support groups
- \* Link you with your local community
- \* Work with you to develop capacity

**Phone 4130 4630**

### Phoenix House

Phoenix House provide supportive, safe and trusted counselling services and come to the Gin Gin Community Hub via appointment. Contact 4153 4299 to book an appointment.



## More Seniors Month Pics....

This Seniors Month we had a huge range of activities for the community to come along and join. The festivities kicked off with Afternoon Tea at Gin Gin Landcare followed by Mahjong, Cards N' All, a Bus Trip to Hervey Bay, Craft N' Chat, Tai Chi, Pilates, a Fashion Parade and Indoor Lawn Bowls. It sure has been a busy month!

We thank all those who participated. It was an incredible opportunity to have those important conversations with the local seniors and carers about what supports and engagement they feel is needed in the community. Please enjoy some photos of Seniors Month activities.





## GGNC Project & Event pics....

### Makerspace—Watercolour Workshop with Sophie Hayati

Watercolour Workshops are held every week on Thursday at 11:30am at the Hub. All welcome to come and join! On the 26 October, Sophie's Watercolour Workshop was joined by Amanda for a weaving workshop. Sophie's sessions gain new faces every week so come along and join the fun!



### Craft 'N Chat with Mel

This year we have had many incredible workshops from Mel. We've had String Art, Rope Coasters, Object Wall Hangers, Painted Sneakers, Rope Wrapping Terracotta Pots, Wall Clock Painting, Windchimes, Photo Collage, Keyrings, Needle Punch Art, Etch Art, Diamond Painting, Wall Hanging and next up Christmas Cookie Decorating. Mel will be back in 2024 with more workshops so stay tuned to see what she has planned!





# Gin Gin Community Noticeboard

**Gin Gin Men's Shed** provide support for local men through hands-on activities such as working with timber and metal work. It is also a place for friendship and talking about issues such as health.  
**Open Wednesday & Friday 7am-11am**

## TUESDAY SOCIAL TENNIS

8.30 am—11.00am

Cost: **\$4.00**

Tea/coffee supplied

Bring racquet, water, hat, sunscreen & soft soled shoes

**All players welcome—Finished for this year—Starts again in February 2024**



## Gin Gin Gardening Group

"Friendship Through Gardening"

*New Members welcome*

Please contact Pat Jackson on 0409 902 500 or Joy Foley-Jones on 0408 022 308



## SOUP KITCHEN

Every Wednesday at 5:00pm at Gin Gin SDA Church

88 Mulgrave Street, Gin Gin

## GIN GIN CROP SWAP

2pm 2nd & 3rd Sundays of the month

Dear Street Park (cnr Elliot and Dear Streets)

You can bring anything from your garden or foraged which is edible, medicinal or useful. There is a great list of suggestions on their Facebook page.

## Women's Fitness Classes

Enjoy basic fitness & flexibility with low impact classes, designed for mature women at National Fitness Hall, cnr Mulgrave & Walker St, Gin Gin. New members welcome!

**CIRCUIT CLASS**      **Tuesdays** 9-10am  
**FITBALL CLASS**      **Thursdays** 9-10am

Cost: \$15 for Tues & Thurs classes attended in same week OR \$10 for single class (either Tues or Thurs)  
Membership: \$10 per year

All equipment supplied  
Bring towel, water bottle & positive attitude  
Phone **Merrilyn** on **0474 071 000**



## Gin Gin Swimming Pool

NOW OPEN

Monday to Friday—9am to 5pm

Saturday—10am to 5pm

Sunday & Public Holidays—11am to 5pm

Christmas Day & Good Friday—CLOSED

## School Savvy Back to School Appeal 2024

Help give families a hand-up to get kids back-to-school ready. CatholicCare CQ are running their School Savvy Program again this year.

Donations stationery second-school uni-can be dropped in box at the



of and hand forms the Hub.

**Would you like to feature your club or group in our newsletter or Gin Gin Neighbourhood Facebook page?**

**Contact our staff on 4130 4630 or email: [ggnc@bundaberg.qld.gov.au](mailto:ggnc@bundaberg.qld.gov.au)**



# Child and Family Support

Hello families. I hope you have all been keeping well. Do you know that as an Early Years and Family Worker, I am available at the HUB to support parents, children and their families within the community with all things related to early childhood? This includes child development, behaviour strategies, routines, toilet training, parenting techniques, and most other early childhood topics. Even if you simply need an ear to listen, I encourage anyone needing support with their child to reach out and give me a call.

Secure attachment and connection between parent and child is important and we like to encourage this by offering our Early Years Playgroups in the community. Take a look at what's recently been happening in the program.

## Kolan Gardens Intergenerational Playgroup

We have enjoyed every minute of play at Kolan Gardens. The delight the children in attendance brought to the faces of the residents is a very heart warming feeling. The sound of children laughing and the sight of children smiling is something special in itself. To see the residents in awe and smiling, makes this playgroup even more beneficial to everyone involved. Thank you to all who supported our Intergenerational Playgroup.





# Early Years Wallaville Playgroups

Wallaville playgroups have been lots of fun this term. We recently had messy play morning for the children to use their senses and enjoy the experience of getting messy while learning.



## Let's Play Together Playgroup



At Let's Play Together we focus a lot on parent and child connections, secure attachment and feeling safe within the environment. Parents and families of children aged up to 18 months are welcome to attend our Child and Family "Let's Play Together" Playgroups which are held at the HUB on the second Thursday of each month from 9.30am. This is also a great place for conversations with others about things you might be experiencing as a new mum and there is the potential to make new friends and connections. Dads also welcome.

## KinderMusik Sessions

The recent Kindermusik sessions were a big success for the children who participated. It was wonderful to see children being able to use music as a learning platform while they explored new skills and experiences.



Gin Gin Child and Family Support facilitates Early Years playgroups each fortnight on a Wednesday (during school terms), from 9.30 am –11.30 am at the Gin Gin Community Hub. Families with children 0–5 years are welcome to attend and morning tea is provided. Please bring a water bottle and spare clothes for messy play.



## Book Club

**Book Club** will be held on the last Monday of the month in 2024, commencing at 12.30pm on Monday 29 January.

We read the same book and then discuss it, expanding our reading experiences.



## Kids' Book Club



Get together with other book lovers, share your book experiences and do fun activities!

**Date:** 1st Thursday of month (excluding public and school holidays) **Time:** 3.15 - 4.15pm

## Story Play

Visit the library for stories, rhymes, songs and plenty of fun! Story Play is designed for children aged 0 - 5 years and their guardians.

**When:** Mondays, 9.30am (excl. public & school holidays)

**Time:** 9.30am



## The Reading Hunt



**The Reading Hunt** is a fun way of increasing early literacy skills in children aged 0 – 5 years by talking, reading, singing and playing. And kids of all ages are loving it. There are nine locations in Gin Gin where families can discover six little signs to enjoy simple activities in our local parks, attractions and, of course, the library! Pick up a map at Gin Gin Community Hub or online at [artsbundaberg.com.au/libraries/reading-hunt-map](https://artsbundaberg.com.au/libraries/reading-hunt-map)

## Staff Departure

At the end of the year we will be saying farewell to Viv. Viv has shared her cheery personality as a Library Assistant here since April 2020. We will certainly miss you Viv and wish you all the very best for the future!



## Christmas closure

The library will close at 4.45pm on 22 December and re-open at 8.15am on Tuesday 2 January 2024

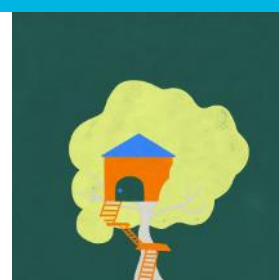


## Summer Reading Club



Summer Reading Club is on from 1 December to 20 January to encourage the kids to read through the holidays. Read at our place, your place or a new place—it's about reading, earning prizes and having fun!

Ask a friendly library staff member for a reading log or book rave to get started.



## School Holiday Activities

**\* bookings essential**

### Christmas Tree Ornament

Create a festive Christmas Tree ornament.

Date: Monday 11 December

Time: 10am

All ages



### Create a 2024 Calendar

Create a personalised calendar for a gift or for yourself.

Date: Monday 18 December

Time: 10am

All ages

### Christmas Gnome

Stitch together a delightful gnome for Christmas.

Date: Tuesday 19 December

Time: 2pm

Ages: 7yrs +

### Treehouse Room

Bring your crazy ideas to design a room in the most amazing treehouse in the library!

Date: Monday 8 January

Time: 10am

All ages



### Board Games and LEGO

No need to book, just drop in and join in!

Date: Wednesday 10 January

Time: 2pm

All ages

### VR & Gaming

Join us in an exciting Virtual Reality experience!

Date: Monday 15 January

Time: 10–11.30am

Ages: 12yrs +

### Miniature Village

Make cute little houses out of paper cups to create your own miniature village.

Date: Wednesday 17 January

Time: 2pm

All ages

**Book in for events:** Library counter or Phone 4130 4620

Gin Gin Library Coordinator: Sharon Millett  
Library Assistants: Georgina Browne, Vivienne Collis  
Library Volunteer: Jordan Levin



# Kolan Community Options

Hello everyone.

It's December! Where did the year go? And how fast? This year has been a year of changes for us here at Kolan Community Options, and we welcome back Lee-Anne Tober as the Kolan Community Options Coordinator, Lee-Anne has moved to part time so is available until 2.30 Monday – Friday We also welcome our new Care Services Lead, Alayna Banks who will be working across Childers and Gin Gin services. You will be familiar with Alayna, Alayna was the Senior Care Worker/Admin for the programs. If Lee-Anne is not available Alayna can assist.

**Don't forget our Christmas Party at the Gin Gin Community Hub on Friday 15 December.** Doors open at 11am for an 11:30am start, \$22 per person. Please RSVP by 11 December by contacting the Hub on Ph 4130 4630 or emailing [ggnc@bundaberg.qld.gov.au](mailto:ggnc@bundaberg.qld.gov.au)

Services will be running as normal up to Friday 22 December.

Kolan Community Options will be closed over the Christmas closure period of 25 December 2023 to 1 January 2024. It will be business as usual from Tuesday 2 January 2024. From the Team here at KCO, have a Merry Christmas and we'll see you in the New Year!

## Aged Care Quality Standards

Service Providers providing Commonwealth subsidised aged care services are required to comply with the Aged Care Quality Standards (Quality Standards). When we have our audit we are assessed and must be able to provide evidence of our compliance with and performance against the Quality Standards.

The Quality Standards focus on outcomes for the consumers (clients) and reflect the level of care and services the community can expect from organisations that provide Commonwealth subsidised aged care service.

The quality Standards are made up of eight individual standards:

### Standard 1

*Consumer dignity*

*And choice*

### Standard 3

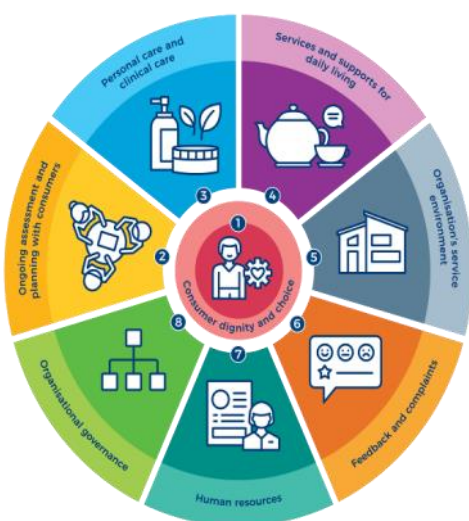
*Personal care and clinical care*

### Standard 5

*Organisation's service environment*

### Standard 7

*Human Resources*



### Standard 2

*Ongoing assessment and planning with consumers*

### Standard 4

*Services and supports for daily living*

### Standard 6

*Feedback and complaints*

### Standard 8

*Organisational governance*



# Aged Care Quality Standards

## Standard 8 - Organisational Governance

### Consumer outcome

8 (1) I am confident the organisation is well run. I can partner in improving the delivery of care and services.

### Organisation Statement

8 (2) The organisations' governing body is accountable for the delivery of safe and quality care and services.

### Requirements

8 (3) The organisation demonstrates the following:

8 (3) (a) Consumers are engaged in the development, delivery and evaluation of care and services and are supported in that engagement.

8 (3) (b) The organisation's governing body promotes a culture of safe, inclusive and quality care and services and is accountable for their delivery.

8 (3) (c) Effective organisation wide governance systems relating to the following:

- (i) information management, (ii) continuous improvement,
- (iii) financial governance, (iv) workforce governance, including the assignment of clear responsibilities and accountabilities, (v) regulatory compliance,
- (vi) feedback and complaints.

8 (3) (d) Effective risk management systems and practices, including but not limited to the following:

- (i) managing high impact or high prevalence risks associated with the care of consumers, (ii) identifying and responding to abuse and neglect of consumers,
- (iii) supporting consumers to live the best life they can, (iv) managing and preventing incidents, including the use of an incident management system.

8 (3) (e) Where clinical care is provided—a clinical governance framework, including but not limited to the following:

- (i) antimicrobial stewardship, (ii) minimising the use of restraint, (iii) open disclosure.





# Kolan Community Options Groups—All Welcome

## Social Lunch Group

2nd Thursday of the month

Thursday 11 January 2023

12 Midday at Highway Hotel

Lunch at own cost. Transport may be available upon enquiry



## Men's Group

Monday January 2023

BBQ at Paradise Dam

Cost \$20

Morning Tea and Lunch Provided

**Please Note there are no outings on public holidays**



## Ladies Group

Thursday 18 January 2023

Lunch at Moore Park Tavern

Cost \$20

Morning Tea provided, Lunch at own cost

**Please Note there are no outings on public holidays**



## The Team

**Community Care Coordinator:** Lee-Anne Tober

**Care Services Lead:** Alayna Banks

**Community Support Workers:** Gayb McNally, Faren Munro

**Care Worker Admin:** Lee Wenborn

**Volunteers:** Brian Carmichael



# December 2023 Calendar

Monday	Tuesday	Wednesday	Thursday	Friday	Saturday	Sunday
				1	2	3
4 GGN Tai Chi, Craft, Cards & Technology Support Lib Story play	5 GGN Cards & Technology Support	6 GGN Technology Support & Pilates C&F Playgroup Christmas Break Up Party KCO Bus	7 GGN Watercolour Workshop w/ Sophie Hayati	8 Donations and Nominations for the Christmas Hamper close	9	10
11 GGN Tai Chi, Craft, Cards & Technology Support Lib School Holiday Activity: xmas tree ornament	12 GGN Cards & Technology Support	13 GGN Technology Support & Pilates KCO Bus	14 GGN Watercolour Workshop w/ Sophie Hayati	15 Community Christmas Luncheon	16	17
18 GGN Tai Chi, Craft, Cards & Technology Support Lib School Holiday Activity: Calendar	19 GGN Cards & Technology Support Lib School Holiday Activity: xmas gnome	20 GGN Technology Support NO PILATES KCO Bus C&F Canvas Art Activity	21 GGN Watercolour Workshop w/ Sophie Hayati	22	23 Library Closed	24 CHRISTMAS EVE
25 CHRISTMAS DAY CLOSED	26 BOXING DAY CLOSED	27 CLOSED	28 CLOSED	29 CLOSED	30 CLOSED	31



# January 2024 Calendar

Monday	Tuesday	Wednesday	Thursday	Friday	Saturday	Sunday
1 <b>CLOSED</b>	2 GGN Cards & Technology Support	3 GGN Technology Support & Pilates <b>KCO Bus</b>	4 GGN Watercolour Workshop w/ Sophie Hayati	5	6	7
8 GGN Tai Chi, Craft, Cards & Technology Support Lib School Holiday Activity: Treehouse room	9 GGN Cards & Technology Support	10 GGN Technology Support & Pilates <b>KCO Bus</b> Lib School Holiday Activity: Board games & lego	11 GGN Watercolour Workshop w/ Sophie Hayati <b>KCO Community Social Lunch</b> Highway Hotel	12	13	14
15 GGN Tai Chi, Craft, Cards & Technology Support Lib School Holiday Activity: VR & gaming <b>KCO Men's Group</b>	16 GGN Cards & Technology Support	17 GGN Technology Support & Pilates <b>KCO Bus</b> Lib School Holiday Activity: Paper cup miniature village	18 GGN Watercolour Workshop w/ Sophie Hayati <b>KCO Ladies Group</b>	19	20	21
22 GGN Tai Chi, Craft, Cards & Technology Support	23 GGN Cards & Technology Support	24 GGN Technology Support & Pilates <b>KCO Bus</b>	25 GGN Watercolour Workshop w/ Sophie Hayati	26	27	28
29 GGN Tai Chi, Craft, Cards & Technology Support Lib Book Club	30 GGN Cards & Technology Support	31 GGN Technology Support & Pilates <b>KCO Bus</b>				