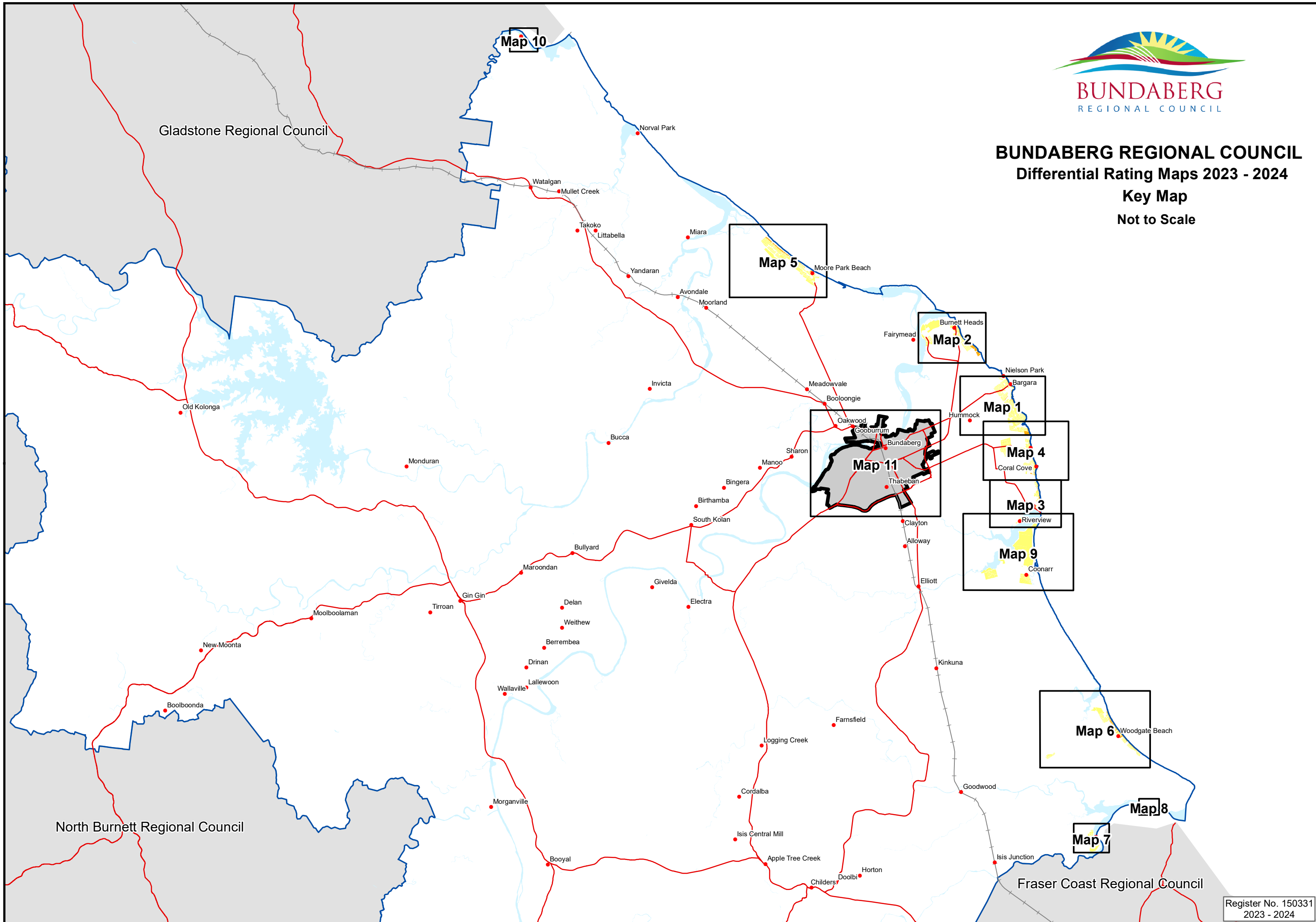




BUNDABERG REGIONAL COUNCIL
Differential Rating Maps 2023 - 2024
Key Map
Not to Scale



LEGEND

- 5 Coastal Towns
- 7 Urban Oceanfront

DISCLAIMER

© The State of Queensland (Department of Environment and Resources Management) 2023. Based on Cadastral Data provided with the permission of the Department of Environment and Resource Management 2023. The information contained within this document is given without acceptance of responsibility for its accuracy. The Bundaberg Regional Council (and its officers, servants and agents), contract and agree to supply information only on that basis. The Department of Environment and Resource Management and the Bundaberg Regional Council gives no warranty in relation to the data (including accuracy, reliability, completeness or suitability) and accepts no liability (including without limitation, liability in negligence) for any loss, damage or costs (including consequential damage) relating to any use of the data.

NOTES

For more detail and an up to date Service Area, see Councils Interactive Mapping Application via the following link:

[Interactive Mapping](#)

or scan the below QR Code:



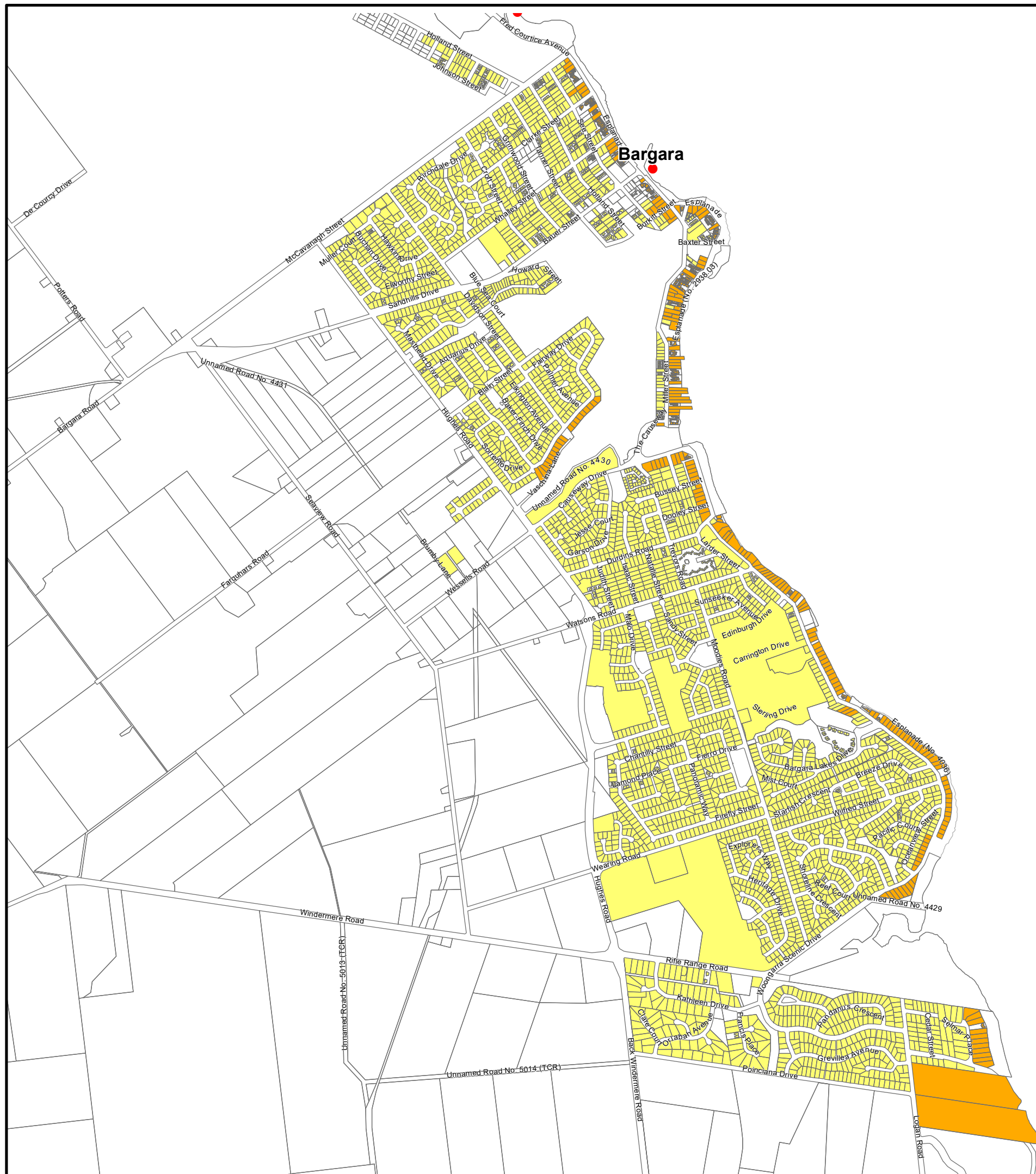
0 240 480 720 960
Metres

Scale 1:20,000

**DIFFERENTIAL
RATING
2023-2024**

Map No. 1

Register No. 150332
June, 2023



LEGEND

- 5 Coastal Towns
- 7 Urban Oceanfront

DISCLAIMER

© The State of Queensland (Department of Environment and Resources Management) 2023. Based on Cadastral Data provided with the permission of the Department of Environment and Resource Management 2023. The information contained within this document is given without acceptance of responsibility for its accuracy. The Bundaberg Regional Council (and its officers, servants and agents), contract and agree to supply information only on that basis. The Department of Environment and Resource Management and the Bundaberg Regional Council gives no warranty in relation to the data (including accuracy, reliability, completeness or suitability) and accepts no liability (including without limitation, liability in negligence) for any loss, damage or costs (including consequential damage) relating to any use of the data.

NOTES

For more detail and an up to date Service Area, see Councils Interactive Mapping Application via the following link:

[Interactive Mapping](#)

or scan the below QR Code:



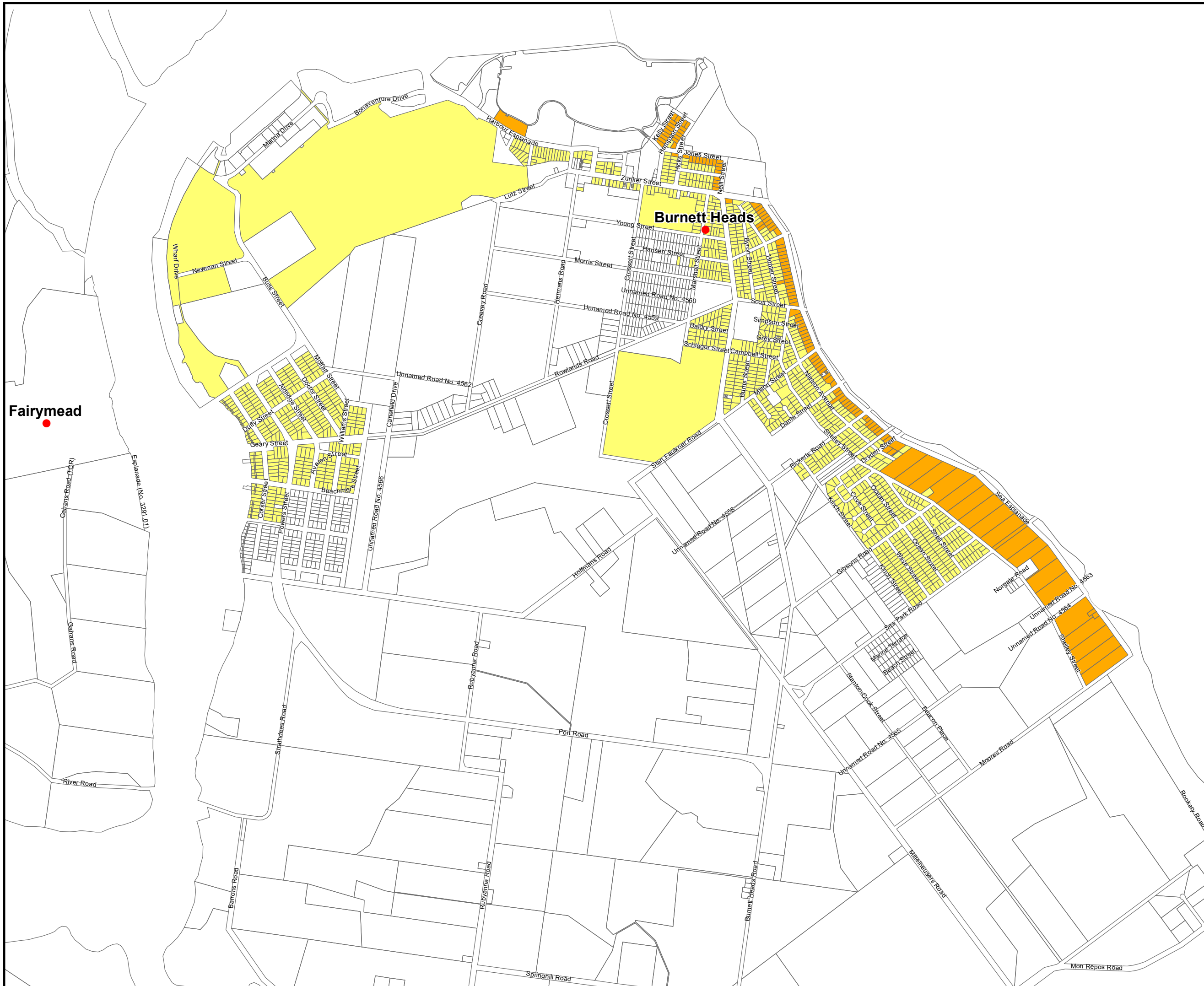
0 240 480 720 960
Metres

Scale 1:20,000

**DIFFERENTIAL
RATING
2023-2024**

Map No. 2

Register No. 150333
June, 2023



LEGEND

- 5 - Coastal Towns
- 7 - Urban Oceanfront

DISCLAIMER

© The State of Queensland (Department of Environment and Resources Management) 2023. Based on Cadastral Data provided with the permission of the Department of Environment and Resource Management 2023. The information contained within this document is given without acceptance of responsibility for its accuracy. The Bundaberg Regional Council (and its officers, servants and agents), contract and agree to supply information only on that basis. The Department of Environment and Resource Management and the Bundaberg Regional Council gives no warranty in relation to the data (including accuracy, reliability, completeness or suitability) and accepts no liability (including without limitation, liability in negligence) for any loss, damage or costs (including consequential damage) relating to any use of the data.

NOTES

For more detail and an up to date Service Area, see Councils Interactive Mapping Application via the following link:

[Interactive Mapping](#)

or scan the below QR Code:



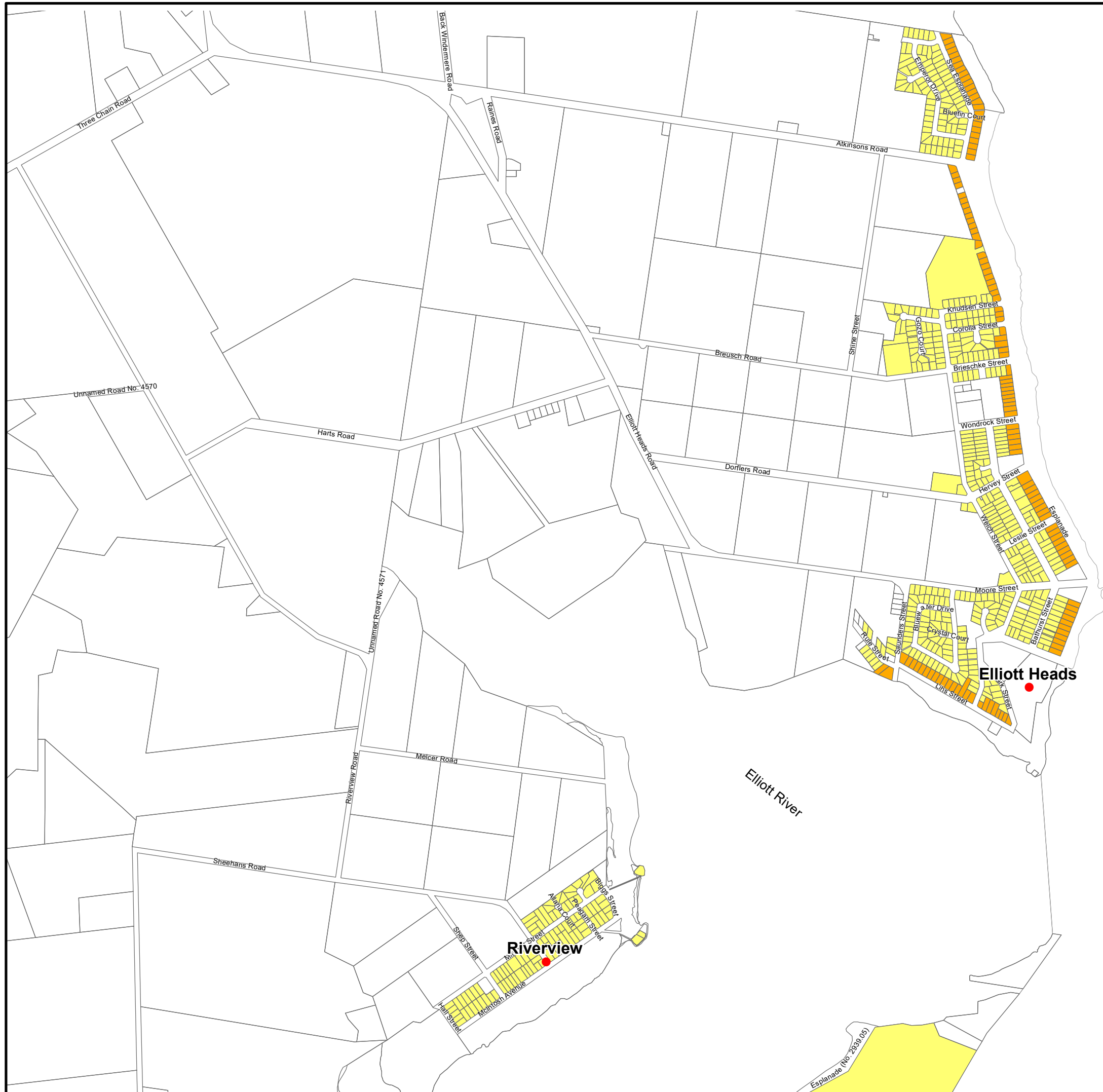
0 180 360 540 720
Metres

Scale 1:15,000

**DIFFERENTIAL
RATING
2023-2024**

Map No. 3

Register No. 150334
June, 2023



LEGEND

- 5 Coastal Towns
- 7 Urban Oceanfront

DISCLAIMER

© The State of Queensland (Department of Environment and Resources Management) 2023. Based on Cadastral Data provided with the permission of the Department of Environment and Resource Management 2023. The information contained within this document is given without acceptance of responsibility for its accuracy. The Bundaberg Regional Council (and its officers, servants and agents), contract and agree to supply information only on that basis. The Department of Environment and Resource Management and the Bundaberg Regional Council gives no warranty in relation to the data (including accuracy, reliability, completeness or suitability) and accepts no liability (including without limitation, liability in negligence) for any loss, damage or costs (including consequential damage) relating to any use of the data.

NOTES

For more detail and an up to date Service Area, see Councils Interactive Mapping Application via the following link:

[Interactive Mapping](#)

or scan the below QR Code:



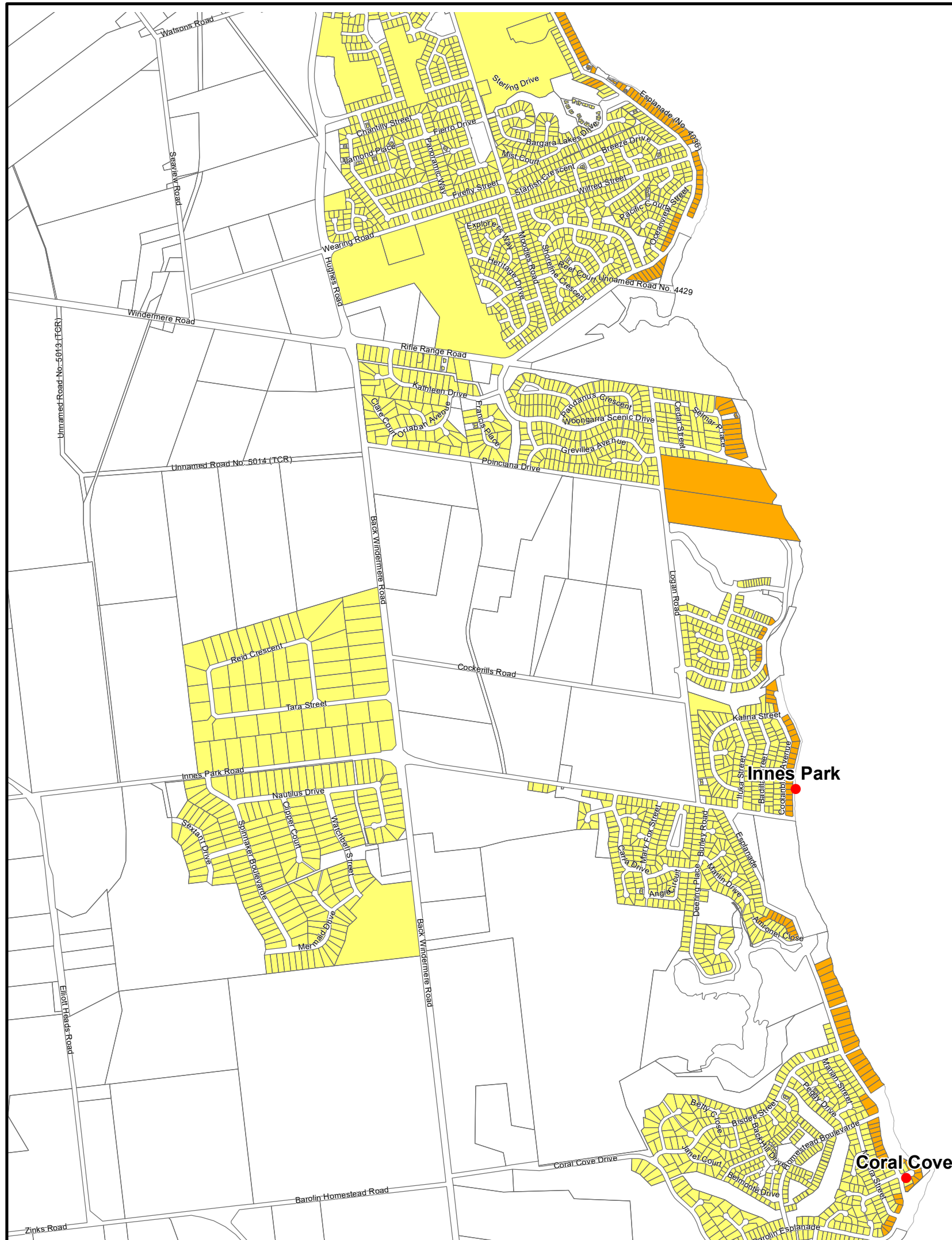
0 240 480 720 960
Metres

Scale 1:20,000

**DIFFERENTIAL
RATING
2023-2024**

Map No. 2

Register No. 150333
June, 2023



LEGEND

- 5 - Coastal Towns
- 7 - Urban Oceanfront

DISCLAIMER

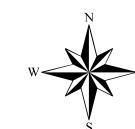
© The State of Queensland (Department of Environment and Resources Management) 2023. Based on Cadastral Data provided with the permission of the Department of Environment and Resource Management 2023. The information contained within this document is given without acceptance of responsibility for its accuracy. The Bundaberg Regional Council (and its officers, servants and agents), contract and agree to supply information only on that basis. The Department of Environment and Resource Management and the Bundaberg Regional Council gives no warranty in relation to the data (including accuracy, reliability, completeness or suitability) and accepts no liability (including without limitation, liability in negligence) for any loss, damage or costs (including consequential damage) relating to any use of the data.

NOTES

For more detail and an up to date Service Area, see Councils Interactive Mapping Application via the following link:

[Interactive Mapping](#)

or scan the below QR Code:



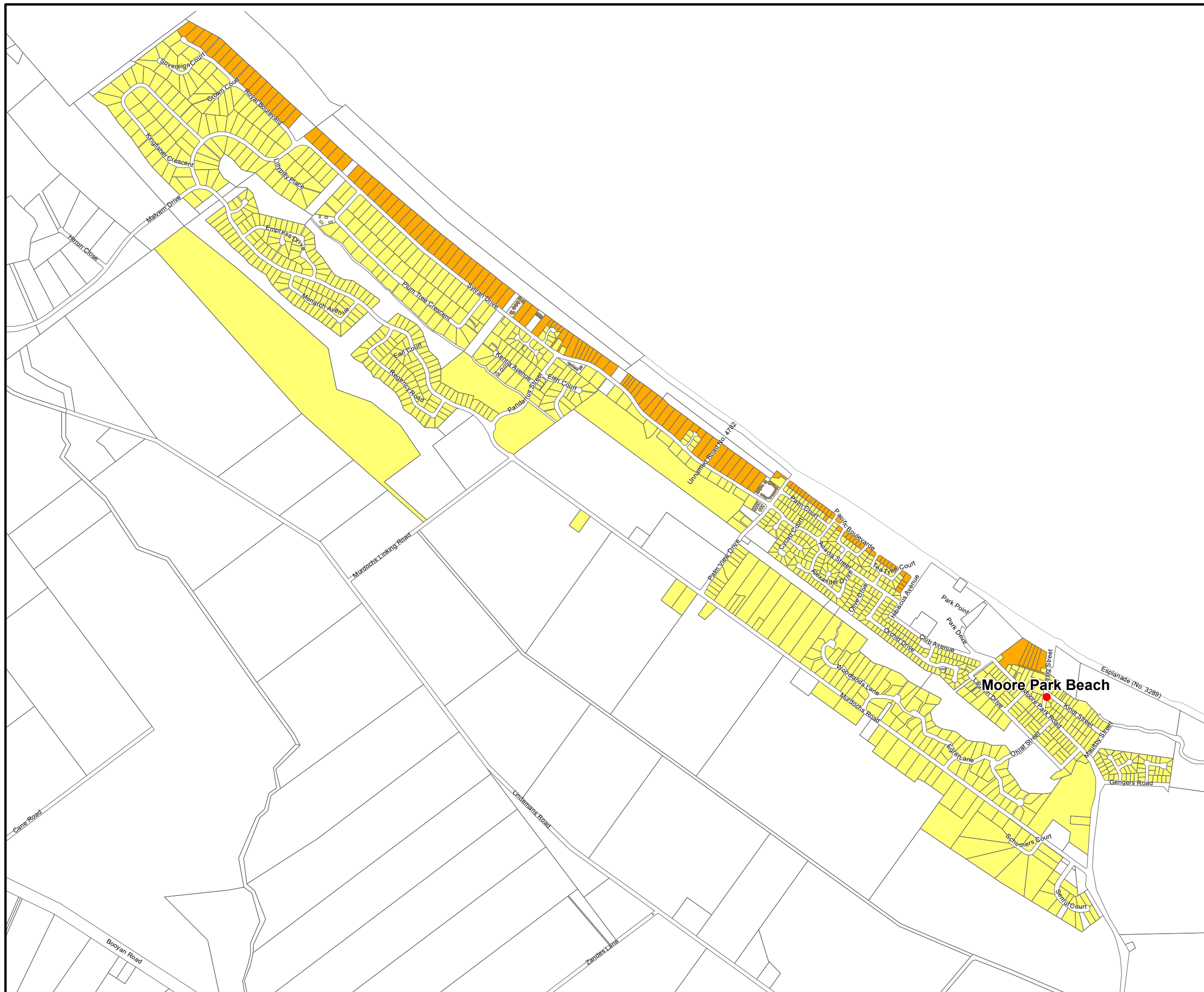
0 210 420 630 840
Metres

Scale 1:17,500

**DIFFERENTIAL
RATING
2023-2024**

Map No. 5

Register No. 150336
June, 2023



LEGEND

- 5 - Coastal Towns
- 7 - Urban Oceanfront

DISCLAIMER

© The State of Queensland (Department of Environment and Resources Management) 2023. Based on Cadastral Data provided with the permission of the Department of Environment and Resource Management 2023. The information contained within this document is given without acceptance of responsibility for its accuracy. The Bundaberg Regional Council (and its officers, servants and agents), contract and agree to supply information only on that basis. The Department of Environment and Resource Management and the Bundaberg Regional Council gives no warranty in relation to the data (including accuracy, reliability, completeness or suitability) and accepts no liability (including without limitation, liability in negligence) for any loss, damage or costs (including consequential damage) relating to any use of the data.

NOTES

For more detail and an up to date Service Area, see Councils Interactive Mapping Application via the following link:

[Interactive Mapping](#)

or scan the below QR Code:



0 330 660 990 1,320
Metres

Scale 1:27,500

**DIFFERENTIAL
RATING
2023-2024**

Map No. 6

Register No. 150337

June, 2023



LEGEND

- 5 - Coastal Towns
- 7 - Urban Oceanfront

DISCLAIMER

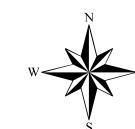
© The State of Queensland (Department of Environment and Resources Management) 2023. Based on Cadastral Data provided with the permission of the Department of Environment and Resource Management 2023. The information contained within this document is given without acceptance of responsibility for its accuracy. The Bundaberg Regional Council (and its officers, servants and agents), contract and agree to supply information only on that basis. The Department of Environment and Resource Management and the Bundaberg Regional Council gives no warranty in relation to the data (including accuracy, reliability, completeness or suitability) and accepts no liability (including without limitation, liability in negligence) for any loss, damage or costs (including consequential damage) relating to any use of the data.

NOTES

For more detail and an up to date Service Area, see Councils Interactive Mapping Application via the following link:

[Interactive Mapping](#)

or scan the below QR Code:



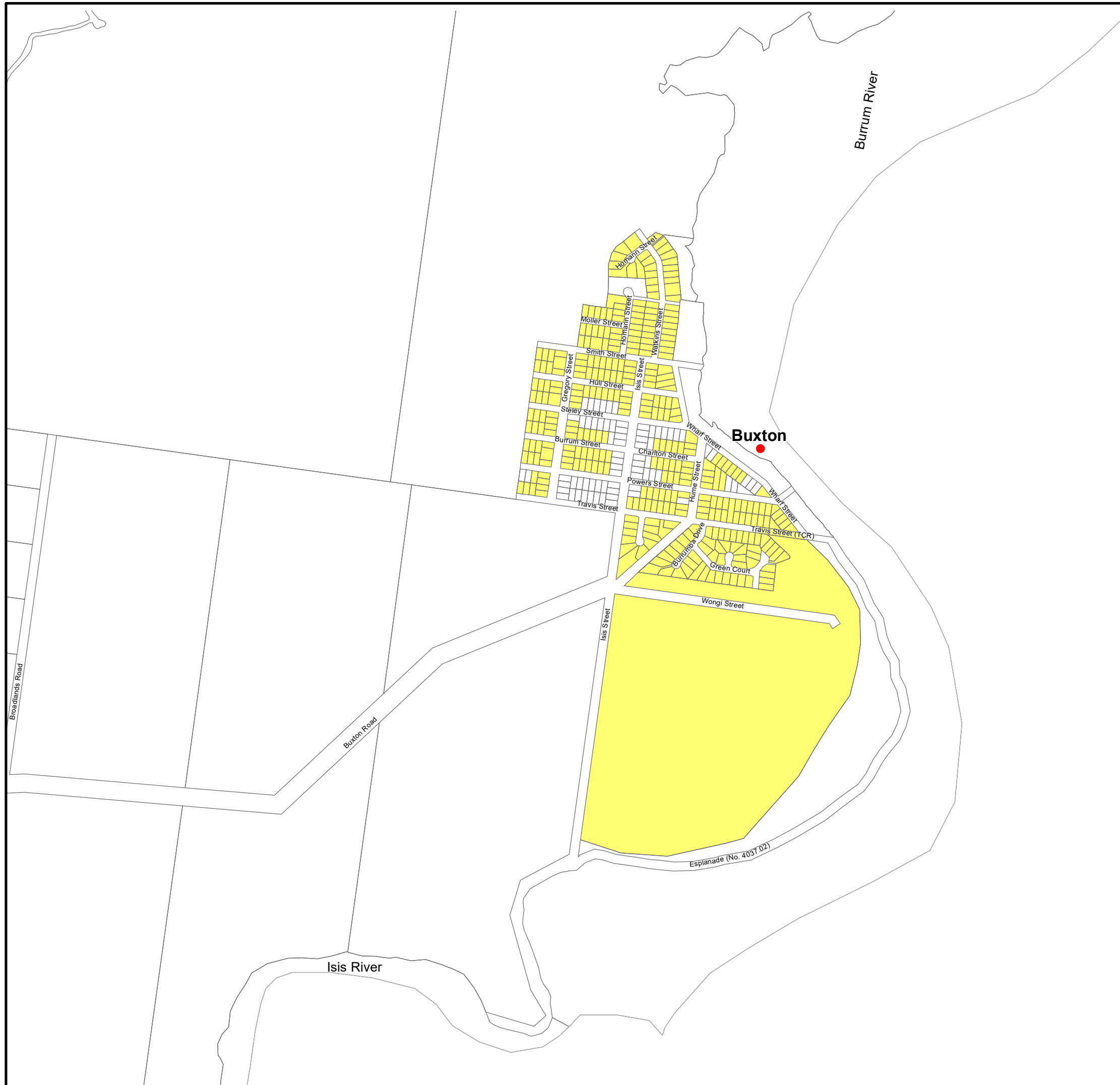
0 150 300 450 600
Metres

Scale 1:12,500

**DIFFERENTIAL
RATING
2023-2024**

Map No. 7

Register No. 150338
June, 2023



LEGEND

- 5 - Coastal Towns
- 7 - Urban Oceanfront

DISCLAIMER

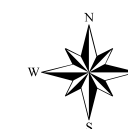
© The State of Queensland (Department of Environment and Resources Management) 2023. Based on Cadastral Data provided with the permission of the Department of Environment and Resource Management 2023. The information contained within this document is given without acceptance of responsibility for its accuracy. The Bundaberg Regional Council (and its officers, servants and agents), contract and agree to supply information only on that basis. The Department of Environment and Resource Management and the Bundaberg Regional Council gives no warranty in relation to the data (including accuracy, reliability, completeness or suitability) and accepts no liability (including without limitation, liability in negligence) for any loss, damage or costs (including consequential damage) relating to any use of the data.

NOTES

For more detail and an up to date Service Area, see Councils Interactive Mapping Application via the following link:

[Interactive Mapping](#)

or scan the below QR Code:



0 60 120 180 240
Metres

Scale 1:5,000

**DIFFERENTIAL
RATING
2023-2024**

Map No. 8

Register No. 150339
June, 2023





LEGEND

- 5 - Coastal Towns
- 7 - Urban Oceanfront

DISCLAIMER

© The State of Queensland (Department of Environment and Resources Management) 2023. Based on Cadastral Data provided with the permission of the Department of Environment and Resource Management 2023. The information contained within this document is given without acceptance of responsibility for its accuracy. The Bundaberg Regional Council (and its officers, servants and agents), contract and agree to supply information only on that basis.

The Department of Environment and Resource Management and the Bundaberg Regional Council gives no warranty in relation to the data (including accuracy, reliability, completeness or suitability) and accepts no liability (including without limitation, liability in negligence) for any loss, damage or costs (including consequential damage) relating to any use of the data.

NOTES

For more detail and an up to date Service Area, see Councils Interactive Mapping Application via the following link:

Interactive Mapping

or scan the below QR Code:



0 270 540 810 1,080

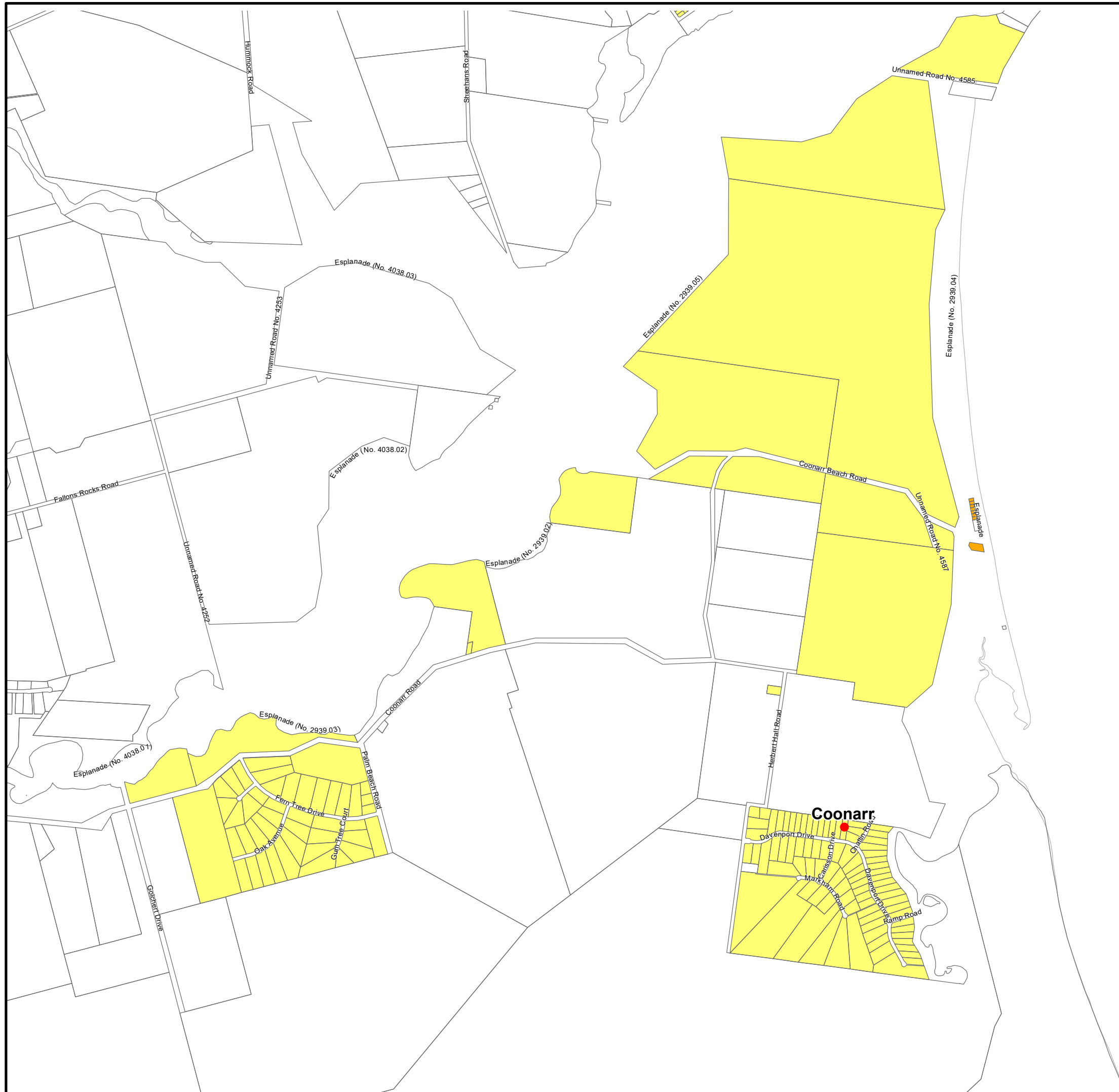
Metres

Scale 1:22,500

DIFFERENTIAL RATING 2023-2024

Map No. 9

Register No. 150340
June, 2023



LEGEND

- 5 - Coastal Towns
- 7 - Urban Oceanfront

DISCLAIMER

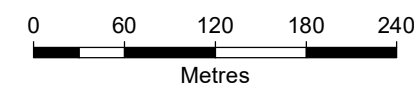
© The State of Queensland (Department of Environment and Resources Management) 2023. Based on Cadastral Data provided with the permission of the Department of Environment and Resource Management 2023. The information contained within this document is given without acceptance of responsibility for its accuracy. The Bundaberg Regional Council (and its officers, servants and agents), contract and agree to supply information only on that basis. The Department of Environment and Resource Management and the Bundaberg Regional Council gives no warranty in relation to the data (including accuracy, reliability, completeness or suitability) and accepts no liability (including without limitation, liability in negligence) for any loss, damage or costs (including consequential damage) relating to any use of the data.

NOTES

For more detail and an up to date Service Area, see Councils Interactive Mapping Application via the following link:

[Interactive Mapping](#)

or scan the below QR Code:

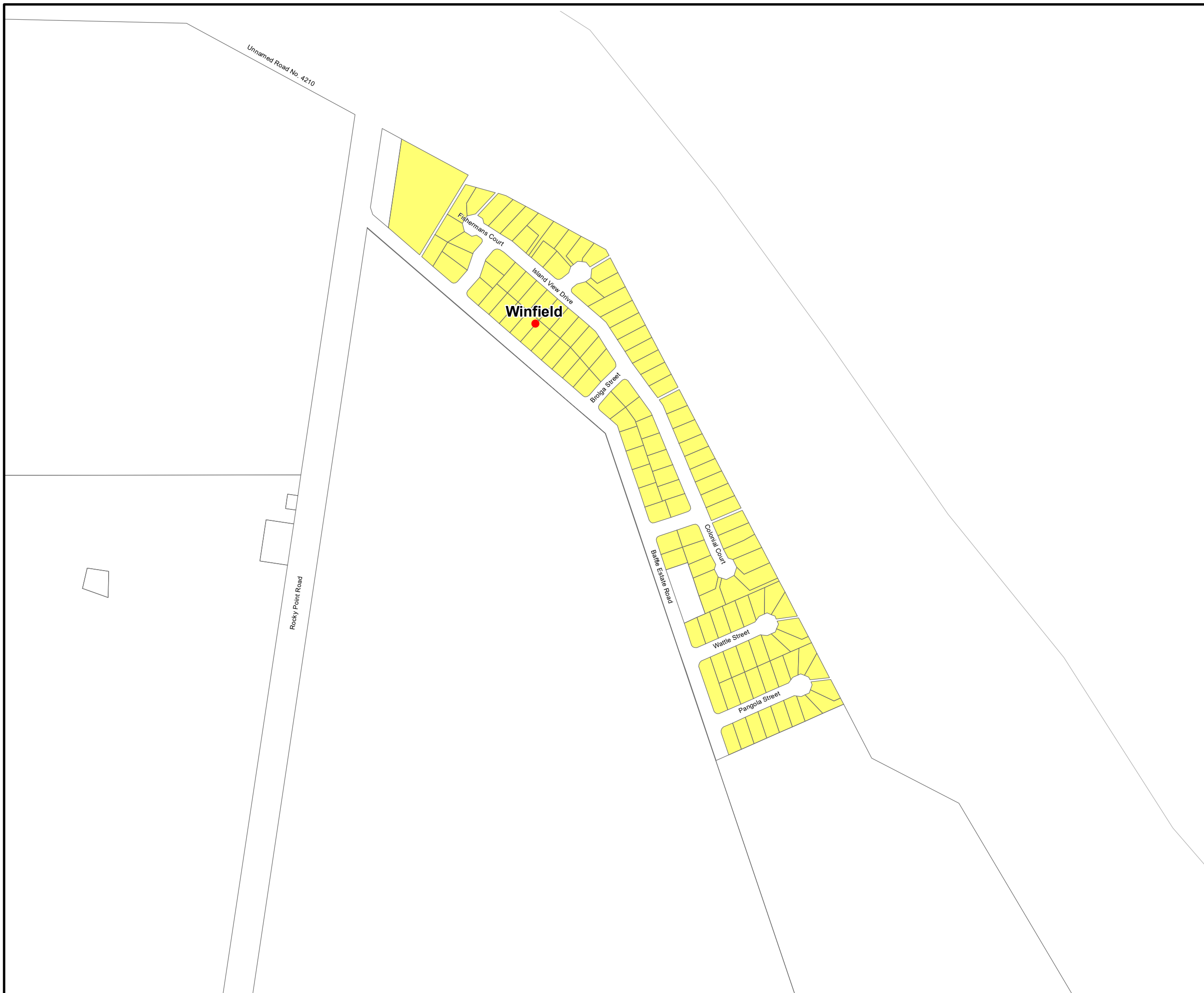


Scale 1:5,000

**DIFFERENTIAL
RATING
2023-2024**

Map No. 10

Register No. 150341
June, 2023



LEGEND

 Bundaberg Commercial Area

DISCLAIMER

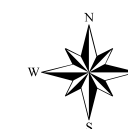
© The State of Queensland (Department of Environment and Resources Management) 2023. Based on Cadastral Data provided with the permission of the Department of Environment and Resource Management 2023. The information contained within this document is given without acceptance of responsibility for its accuracy. The Bundaberg Regional Council (and its officers, servants and agents), contract and agree to supply information only on that basis. The Department of Environment and Resource Management and the Bundaberg Regional Council gives no warranty in relation to the data (including accuracy, reliability, completeness or suitability) and accepts no liability (including without limitation, liability in negligence) for any loss, damage or costs (including consequential damage) relating to any use of the data.

NOTES

For more detail and an up to date Service Area, see Councils Interactive Mapping Application via the following link:

[Interactive Mapping](#)

or scan the below QR Code:



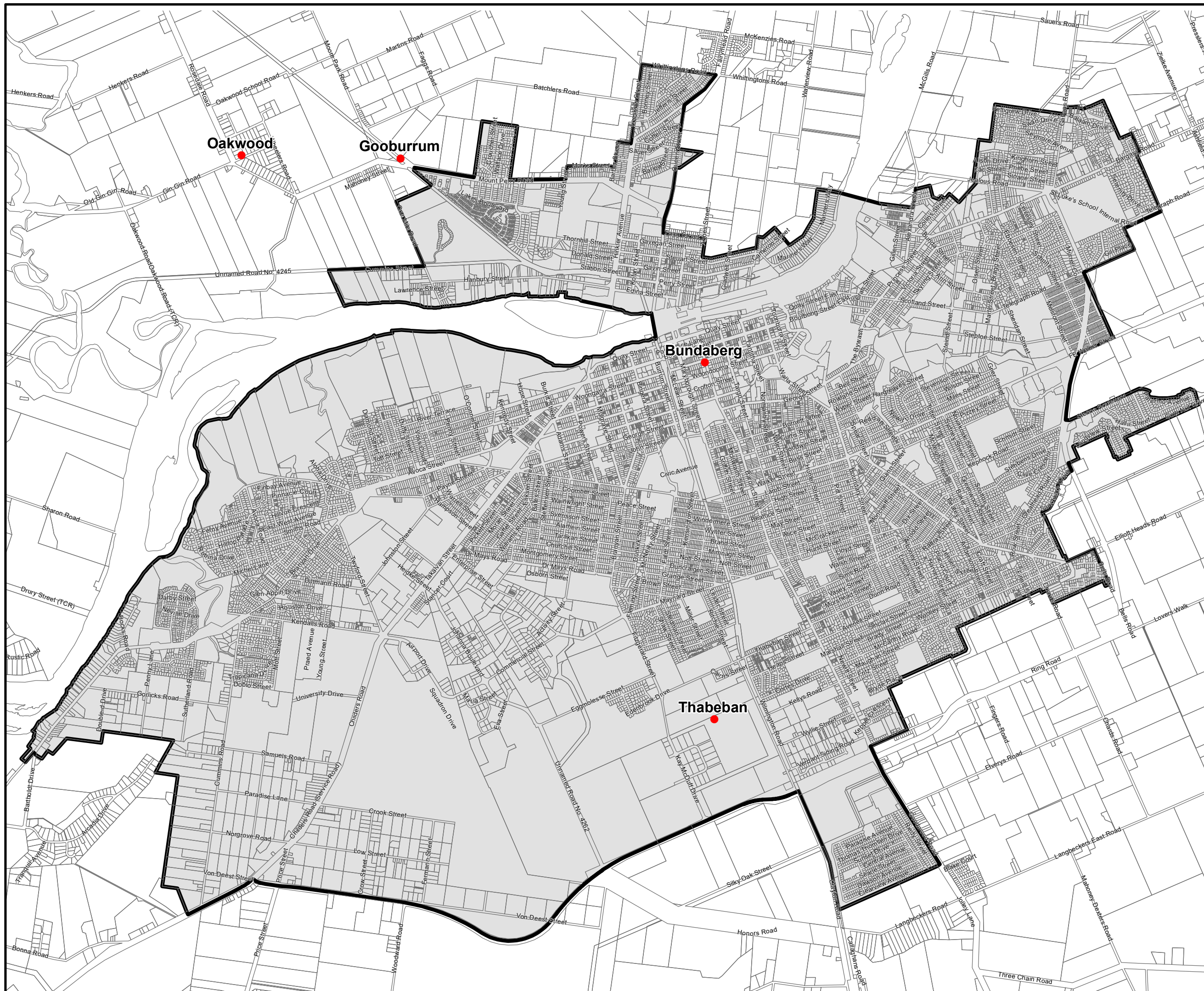
0 420 840 1,260 1,680
Metres

Scale 1:35,000

**DIFFERENTIAL
RATING
2023-2024**

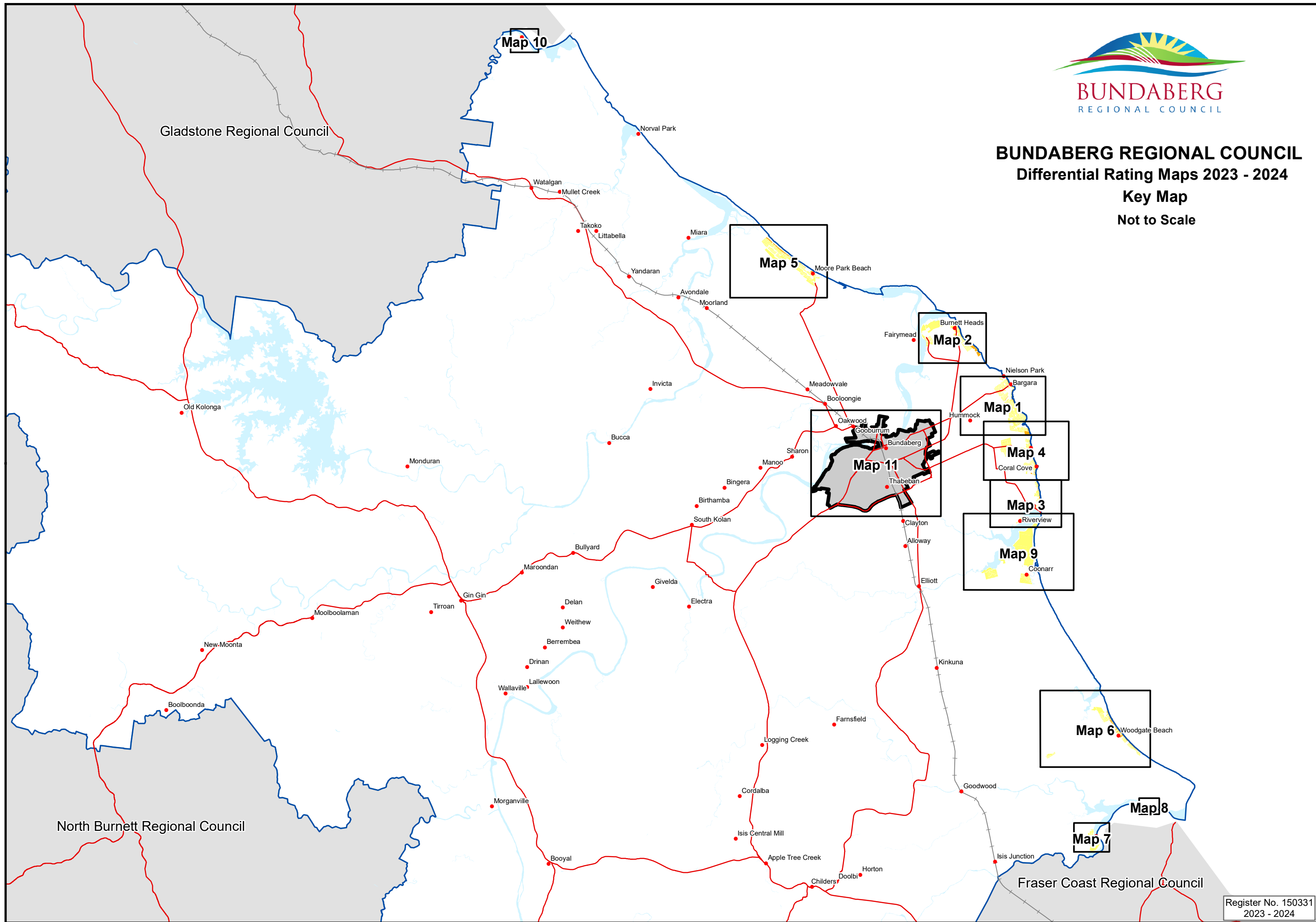
Map No. 11

Register No. 150342
June, 2023





BUNDABERG REGIONAL COUNCIL
Differential Rating Maps 2023 - 2024
Key Map
Not to Scale



LEGEND

- 5 Coastal Towns
- 7 Urban Oceanfront

DISCLAIMER

© The State of Queensland (Department of Environment and Resources Management) 2023. Based on Cadastral Data provided with the permission of the Department of Environment and Resource Management 2023. The information contained within this document is given without acceptance of responsibility for its accuracy. The Bundaberg Regional Council (and its officers, servants and agents), contract and agree to supply information only on that basis. The Department of Environment and Resource Management and the Bundaberg Regional Council gives no warranty in relation to the data (including accuracy, reliability, completeness or suitability) and accepts no liability (including without limitation, liability in negligence) for any loss, damage or costs (including consequential damage) relating to any use of the data.

NOTES

For more detail and an up to date Service Area, see Councils Interactive Mapping Application via the following link:

[Interactive Mapping](#)

or scan the below QR Code:



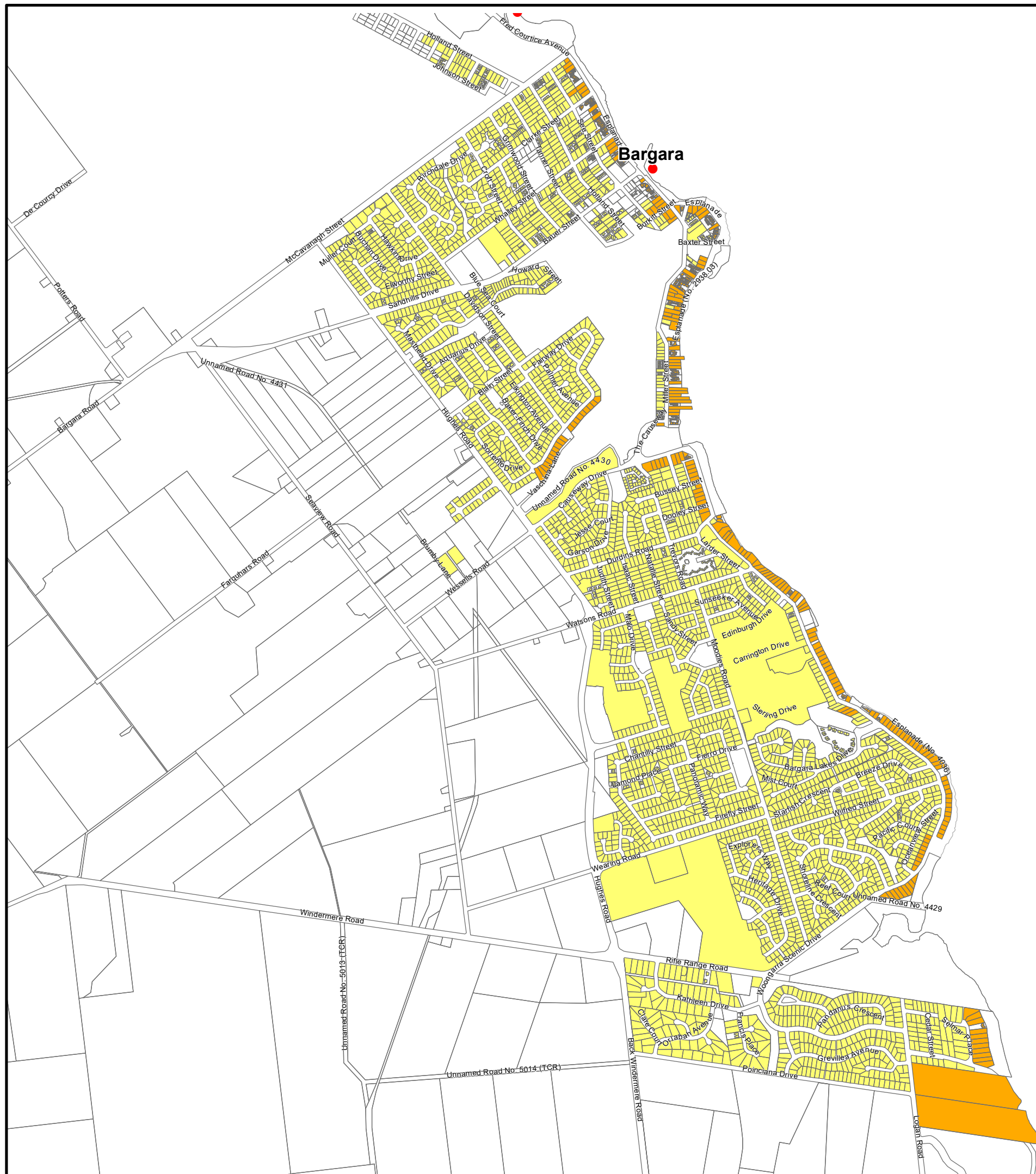
0 240 480 720 960
Metres

Scale 1:20,000

**DIFFERENTIAL
RATING
2023-2024**

Map No. 1

Register No. 150332
June, 2023



LEGEND

- 5 Coastal Towns
- 7 Urban Oceanfront

DISCLAIMER

© The State of Queensland (Department of Environment and Resources Management) 2023. Based on Cadastral Data provided with the permission of the Department of Environment and Resource Management 2023. The information contained within this document is given without acceptance of responsibility for its accuracy. The Bundaberg Regional Council (and its officers, servants and agents), contract and agree to supply information only on that basis. The Department of Environment and Resource Management and the Bundaberg Regional Council gives no warranty in relation to the data (including accuracy, reliability, completeness or suitability) and accepts no liability (including without limitation, liability in negligence) for any loss, damage or costs (including consequential damage) relating to any use of the data.

NOTES

For more detail and an up to date Service Area, see Councils Interactive Mapping Application via the following link:

[Interactive Mapping](#)

or scan the below QR Code:



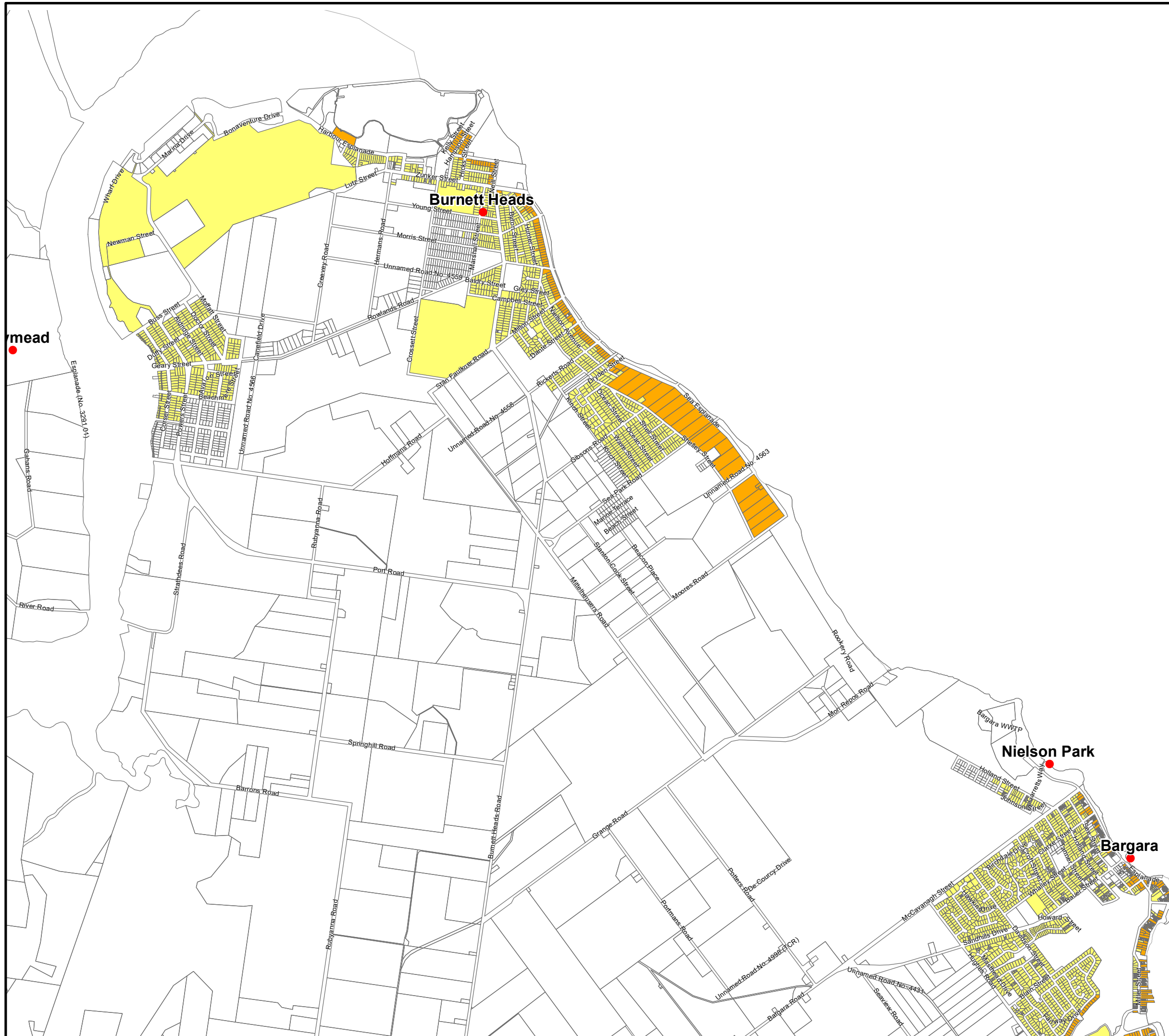
0 350 700 1,050 1,400
Metres

Scale 1:29,453

**DIFFERENTIAL
RATING
2023-2024**

Map No. 2

Register No. 150333
June, 2023



LEGEND

- 5 - Coastal Towns
- 7 - Urban Oceanfront

DISCLAIMER

© The State of Queensland (Department of Environment and Resources Management) 2023. Based on Cadastral Data provided with the permission of the Department of Environment and Resource Management 2023. The information contained within this document is given without acceptance of responsibility for its accuracy. The Bundaberg Regional Council (and its officers, servants and agents), contract and agree to supply information only on that basis. The Department of Environment and Resource Management and the Bundaberg Regional Council gives no warranty in relation to the data (including accuracy, reliability, completeness or suitability) and accepts no liability (including without limitation, liability in negligence) for any loss, damage or costs (including consequential damage) relating to any use of the data.

NOTES

For more detail and an up to date Service Area, see Councils Interactive Mapping Application via the following link:

[Interactive Mapping](#)

or scan the below QR Code:



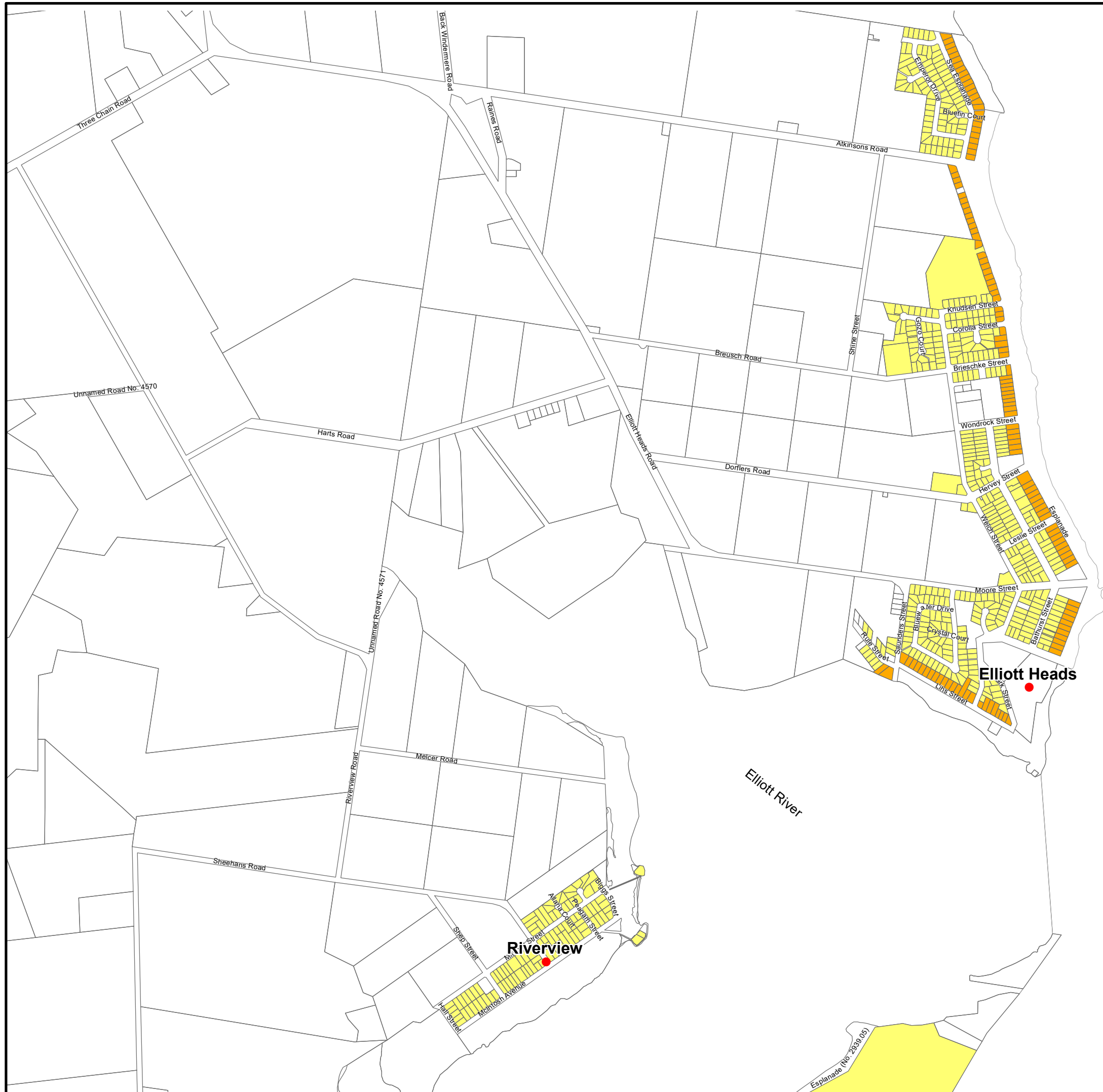
0 180 360 540 720
Metres

Scale 1:15,000

**DIFFERENTIAL
RATING
2023-2024**

Map No. 3

Register No. 150334
June, 2023



LEGEND

- 5 Coastal Towns
- 7 Urban Oceanfront

DISCLAIMER

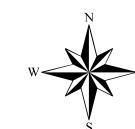
© The State of Queensland (Department of Environment and Resources Management) 2023. Based on Cadastral Data provided with the permission of the Department of Environment and Resource Management 2023. The information contained within this document is given without acceptance of responsibility for its accuracy. The Bundaberg Regional Council (and its officers, servants and agents), contract and agree to supply information only on that basis. The Department of Environment and Resource Management and the Bundaberg Regional Council gives no warranty in relation to the data (including accuracy, reliability, completeness or suitability) and accepts no liability (including without limitation, liability in negligence) for any loss, damage or costs (including consequential damage) relating to any use of the data.

NOTES

For more detail and an up to date Service Area, see Councils Interactive Mapping Application via the following link:

[Interactive Mapping](#)

or scan the below QR Code:



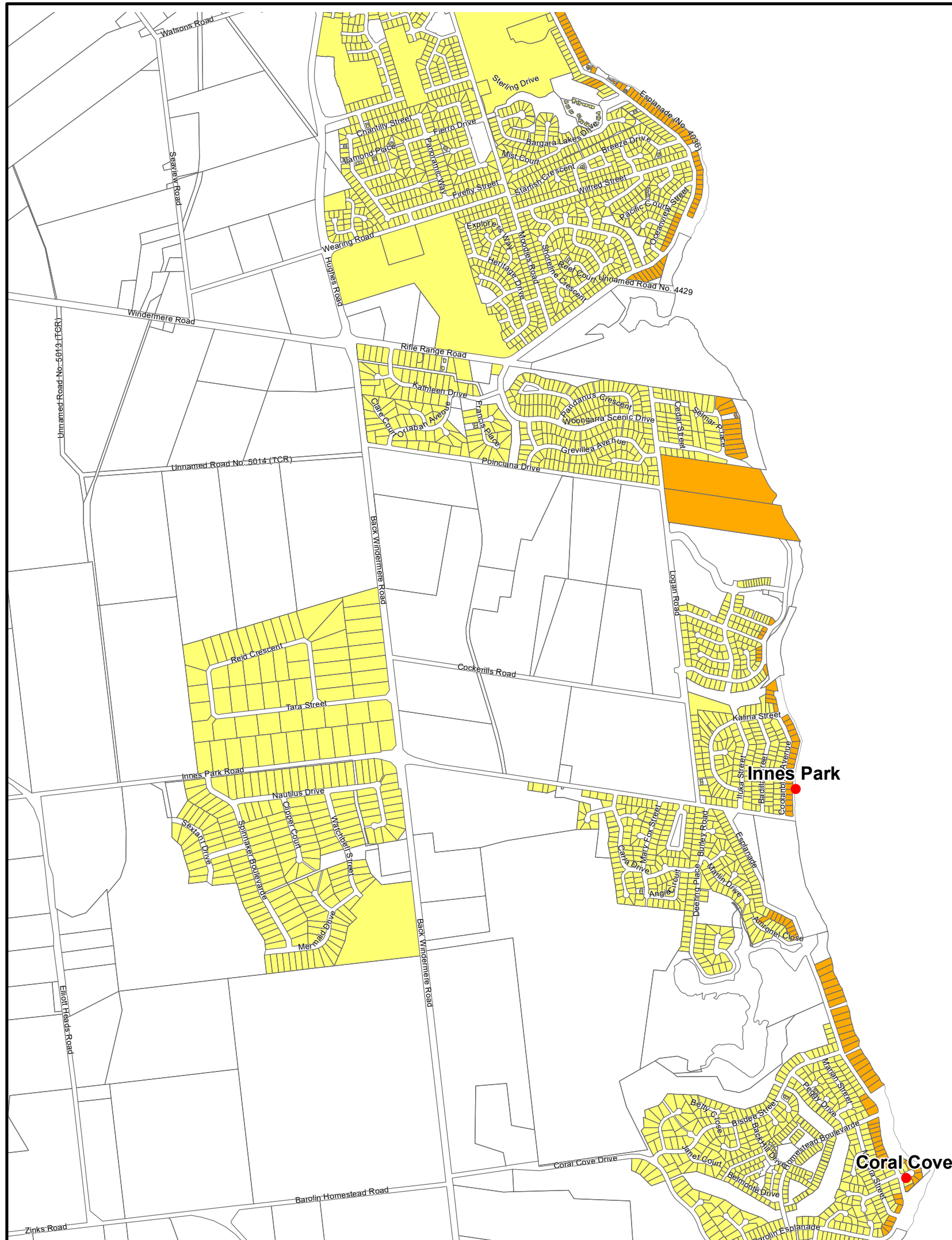
0 240 480 720 960
Metres

Scale 1:20,000

**DIFFERENTIAL
RATING
2023-2024**

Map No. 2

Register No. 150333
June, 2023



LEGEND

- 5 - Coastal Towns
- 7 - Urban Oceanfront

DISCLAIMER

© The State of Queensland (Department of Environment and Resources Management) 2023. Based on Cadastral Data provided with the permission of the Department of Environment and Resource Management 2023. The information contained within this document is given without acceptance of responsibility for its accuracy. The Bundaberg Regional Council (and its officers, servants and agents), contract and agree to supply information only on that basis. The Department of Environment and Resource Management and the Bundaberg Regional Council gives no warranty in relation to the data (including accuracy, reliability, completeness or suitability) and accepts no liability (including without limitation, liability in negligence) for any loss, damage or costs (including consequential damage) relating to any use of the data.

NOTES

For more detail and an up to date Service Area, see Councils Interactive Mapping Application via the following link:

[Interactive Mapping](#)

or scan the below QR Code:



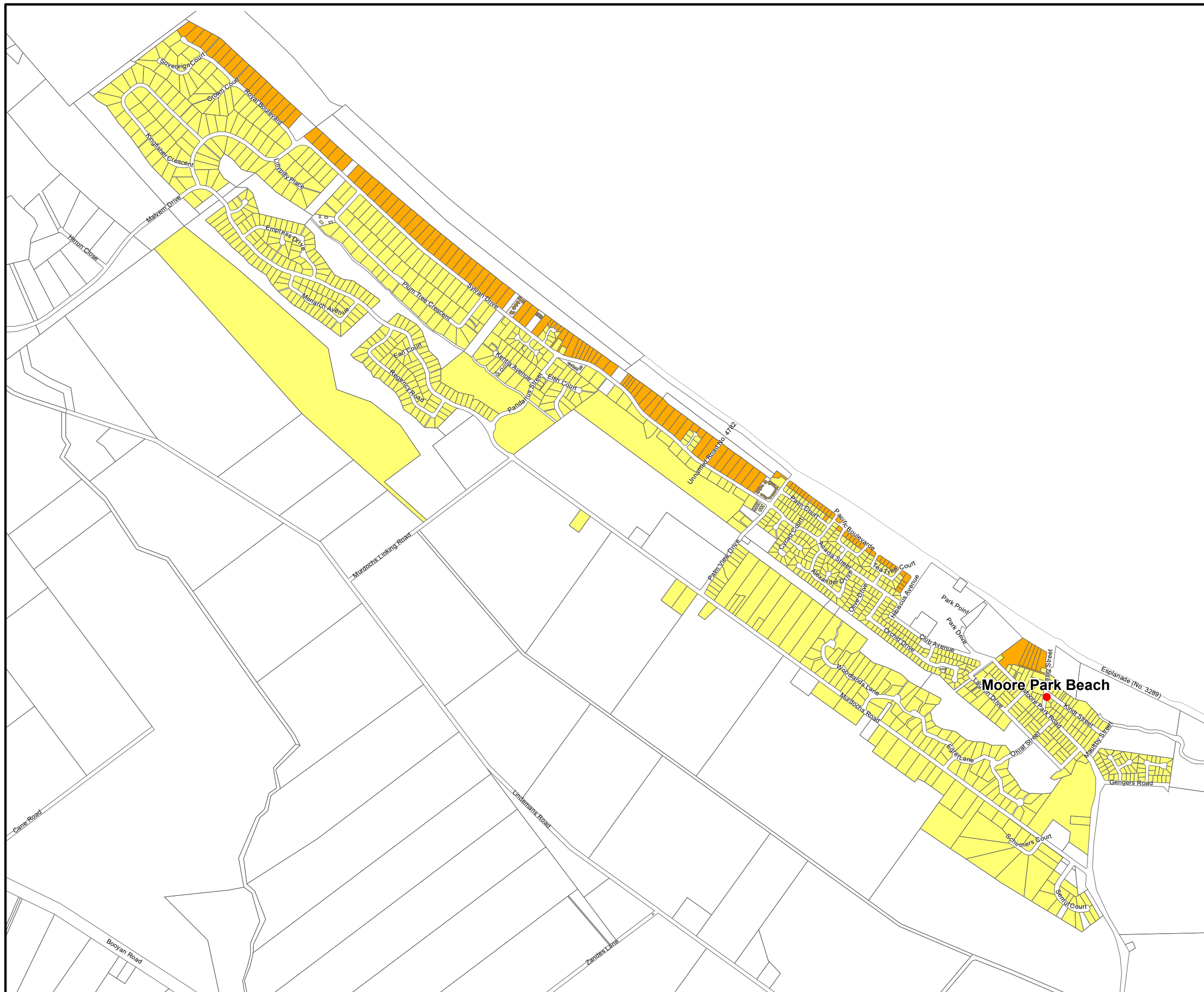
0 210 420 630 840
Metres

Scale 1:17,500

**DIFFERENTIAL
RATING
2023-2024**

Map No. 5

Register No. 150336
June, 2023



LEGEND

- 5 - Coastal Towns
- 7 - Urban Oceanfront

DISCLAIMER

© The State of Queensland (Department of Environment and Resources Management) 2023. Based on Cadastral Data provided with the permission of the Department of Environment and Resource Management 2023. The information contained within this document is given without acceptance of responsibility for its accuracy. The Bundaberg Regional Council (and its officers, servants and agents), contract and agree to supply information only on that basis. The Department of Environment and Resource Management and the Bundaberg Regional Council gives no warranty in relation to the data (including accuracy, reliability, completeness or suitability) and accepts no liability (including without limitation, liability in negligence) for any loss, damage or costs (including consequential damage) relating to any use of the data.

NOTES

For more detail and an up to date Service Area, see Councils Interactive Mapping Application via the following link:

[Interactive Mapping](#)

or scan the below QR Code:



0 330 660 990 1,320
Metres

Scale 1:27,500

**DIFFERENTIAL
RATING
2023-2024**

Map No. 6

Register No. 150337

June, 2023



LEGEND

- 5 - Coastal Towns
- 7 - Urban Oceanfront

DISCLAIMER

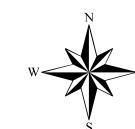
© The State of Queensland (Department of Environment and Resources Management) 2023. Based on Cadastral Data provided with the permission of the Department of Environment and Resource Management 2023. The information contained within this document is given without acceptance of responsibility for its accuracy. The Bundaberg Regional Council (and its officers, servants and agents), contract and agree to supply information only on that basis. The Department of Environment and Resource Management and the Bundaberg Regional Council gives no warranty in relation to the data (including accuracy, reliability, completeness or suitability) and accepts no liability (including without limitation, liability in negligence) for any loss, damage or costs (including consequential damage) relating to any use of the data.

NOTES

For more detail and an up to date Service Area, see Councils Interactive Mapping Application via the following link:

[Interactive Mapping](#)

or scan the below QR Code:



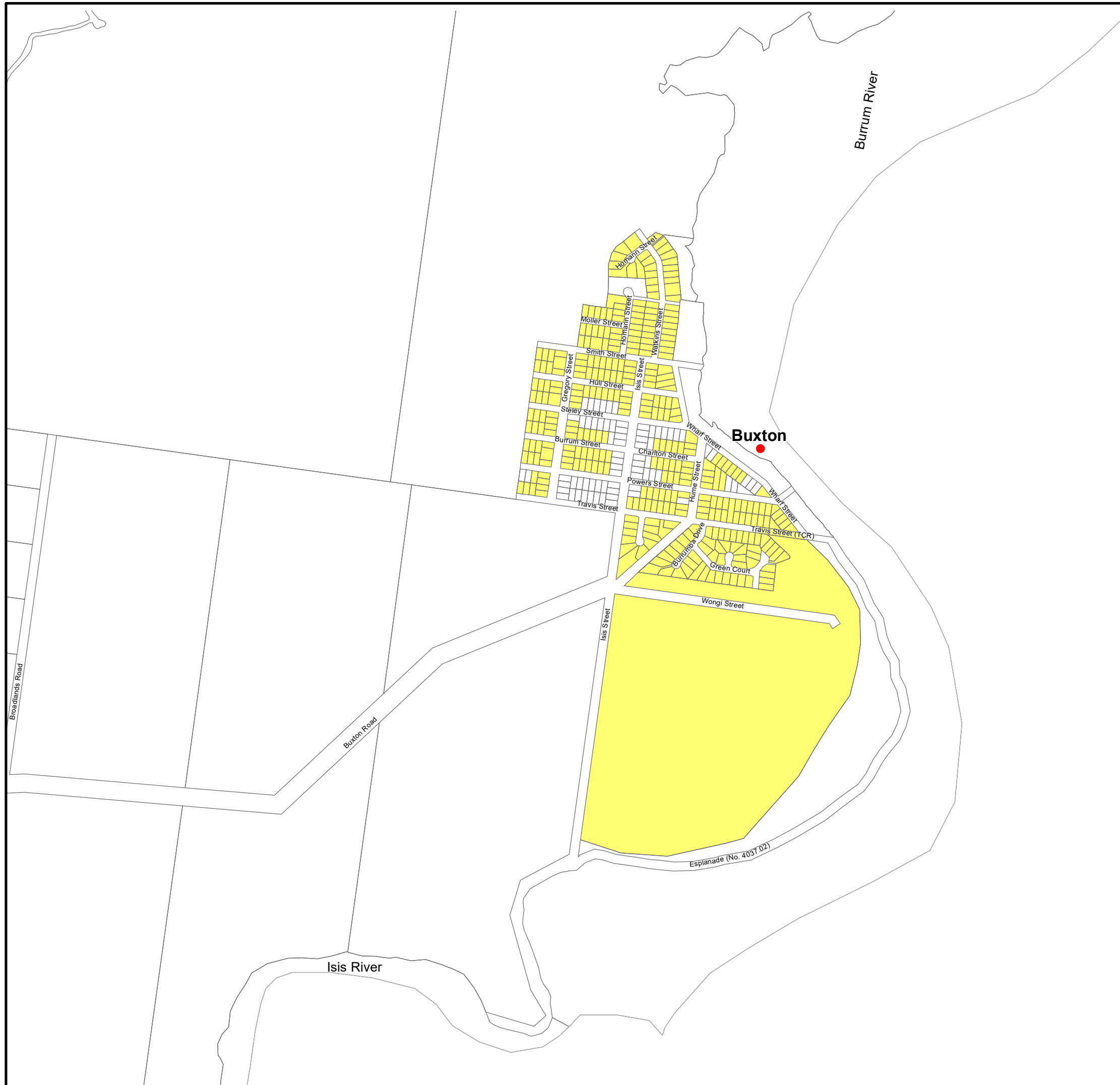
0 150 300 450 600
Metres

Scale 1:12,500

**DIFFERENTIAL
RATING
2023-2024**

Map No. 7

Register No. 150338
June, 2023



LEGEND

- 5 - Coastal Towns
- 7 - Urban Oceanfront

DISCLAIMER

© The State of Queensland (Department of Environment and Resources Management) 2023. Based on Cadastral Data provided with the permission of the Department of Environment and Resource Management 2023. The information contained within this document is given without acceptance of responsibility for its accuracy. The Bundaberg Regional Council (and its officers, servants and agents), contract and agree to supply information only on that basis. The Department of Environment and Resource Management and the Bundaberg Regional Council gives no warranty in relation to the data (including accuracy, reliability, completeness or suitability) and accepts no liability (including without limitation, liability in negligence) for any loss, damage or costs (including consequential damage) relating to any use of the data.

NOTES

For more detail and an up to date Service Area, see Councils Interactive Mapping Application via the following link:

[Interactive Mapping](#)

or scan the below QR Code:



0 60 120 180 240
Metres

Scale 1:5,000

**DIFFERENTIAL
RATING
2023-2024**

Map No. 8

Register No. 150339
June, 2023



LEGEND

- 5 - Coastal Towns
- 7 - Urban Oceanfront

DISCLAIMER

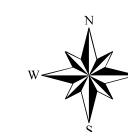
© The State of Queensland (Department of Environment and Resources Management) 2023. Based on Cadastral Data provided with the permission of the Department of Environment and Resource Management 2023. The information contained within this document is given without acceptance of responsibility for its accuracy. The Bundaberg Regional Council (and its officers, servants and agents), contract and agree to supply information only on that basis. The Department of Environment and Resource Management and the Bundaberg Regional Council gives no warranty in relation to the data (including accuracy, reliability, completeness or suitability) and accepts no liability (including without limitation, liability in negligence) for any loss, damage or costs (including consequential damage) relating to any use of the data.

NOTES

For more detail and an up to date Service Area, see Councils Interactive Mapping Application via the following link:

[Interactive Mapping](#)

or scan the below QR Code:



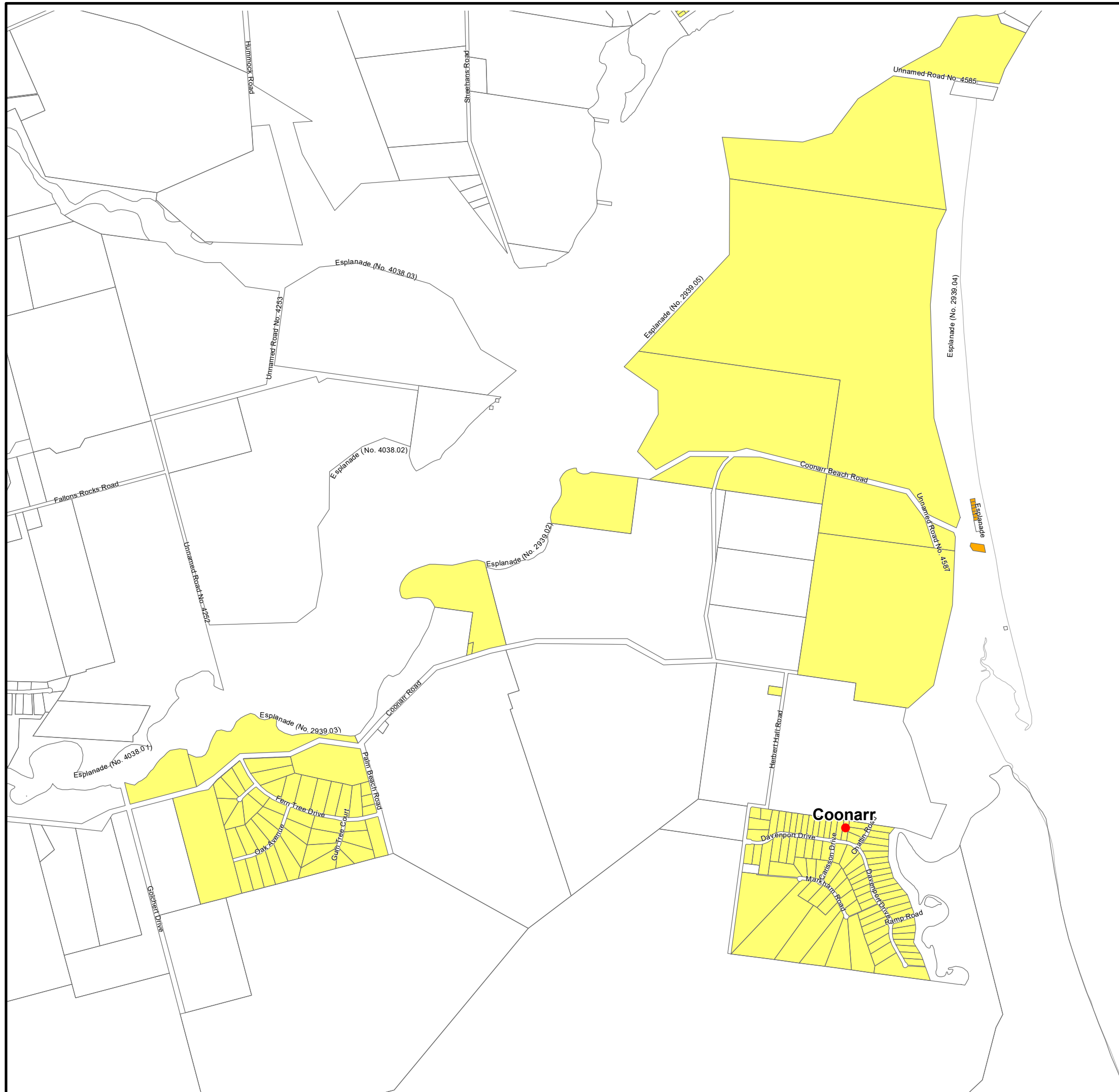
0 270 540 810 1,080
Metres

Scale 1:22,500

**DIFFERENTIAL
RATING
2023-2024**

Map No. 9

Register No. 150340
June, 2023



LEGEND

- 5 - Coastal Towns
- 7 - Urban Oceanfront

DISCLAIMER

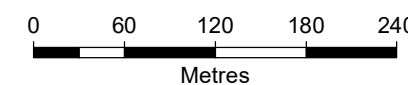
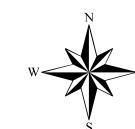
© The State of Queensland (Department of Environment and Resources Management) 2023. Based on Cadastral Data provided with the permission of the Department of Environment and Resource Management 2023. The information contained within this document is given without acceptance of responsibility for its accuracy. The Bundaberg Regional Council (and its officers, servants and agents), contract and agree to supply information only on that basis. The Department of Environment and Resource Management and the Bundaberg Regional Council gives no warranty in relation to the data (including accuracy, reliability, completeness or suitability) and accepts no liability (including without limitation, liability in negligence) for any loss, damage or costs (including consequential damage) relating to any use of the data.

NOTES

For more detail and an up to date Service Area, see Councils Interactive Mapping Application via the following link:

[Interactive Mapping](#)

or scan the below QR Code:

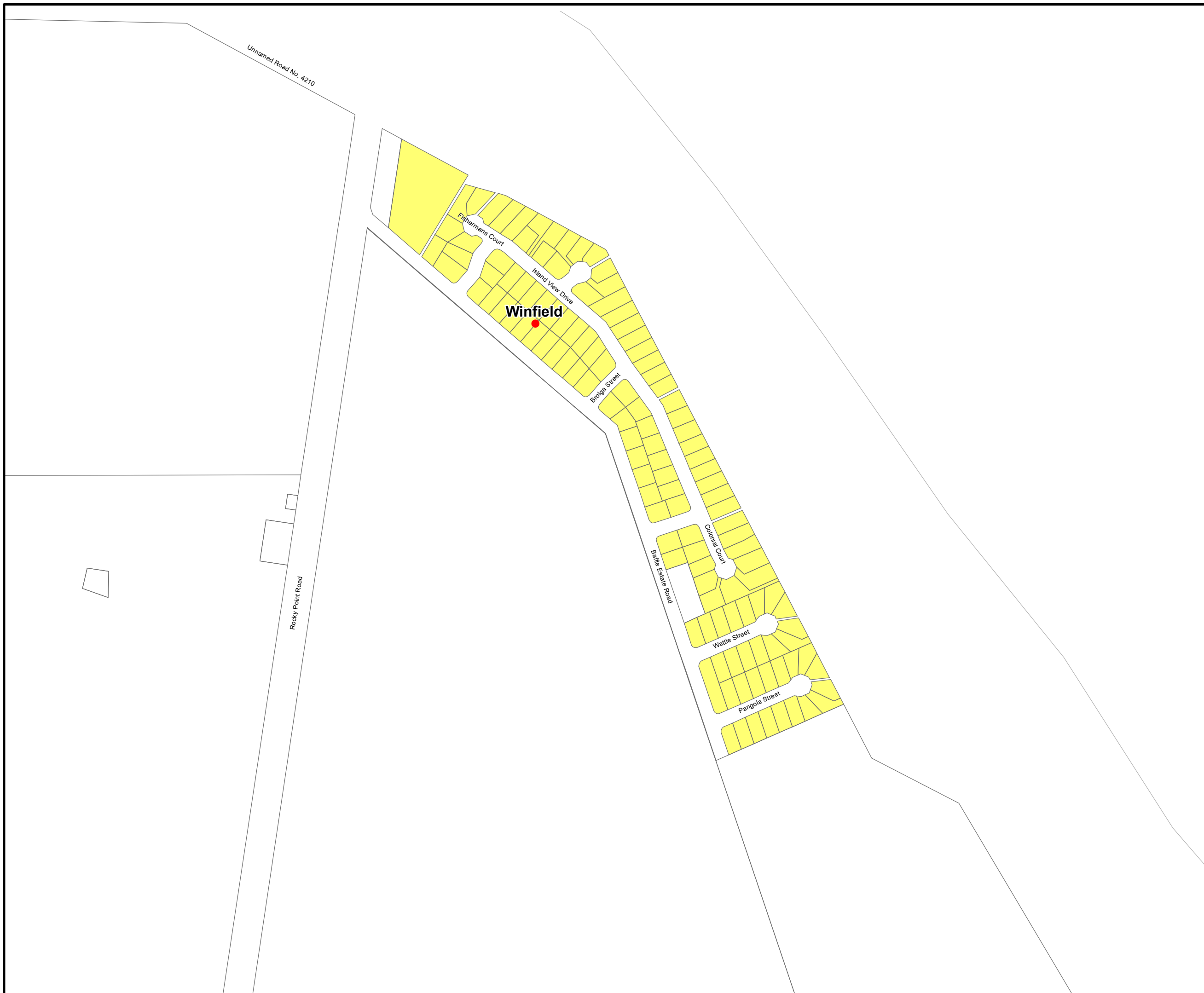


Scale 1:5,000

**DIFFERENTIAL
RATING
2023-2024**

Map No. 10

Register No. 150341
June, 2023



LEGEND

 Bundaberg Commercial Area

DISCLAIMER

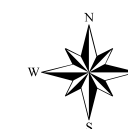
© The State of Queensland (Department of Environment and Resources Management) 2023. Based on Cadastral Data provided with the permission of the Department of Environment and Resource Management 2023. The information contained within this document is given without acceptance of responsibility for its accuracy. The Bundaberg Regional Council (and its officers, servants and agents), contract and agree to supply information only on that basis. The Department of Environment and Resource Management and the Bundaberg Regional Council gives no warranty in relation to the data (including accuracy, reliability, completeness or suitability) and accepts no liability (including without limitation, liability in negligence) for any loss, damage or costs (including consequential damage) relating to any use of the data.

NOTES

For more detail and an up to date Service Area, see Councils Interactive Mapping Application via the following link:

[Interactive Mapping](#)

or scan the below QR Code:



0 420 840 1,260 1,680
Metres

Scale 1:35,000

**DIFFERENTIAL
RATING
2023-2024**

Map No. 11

Register No. 150342
June, 2023

