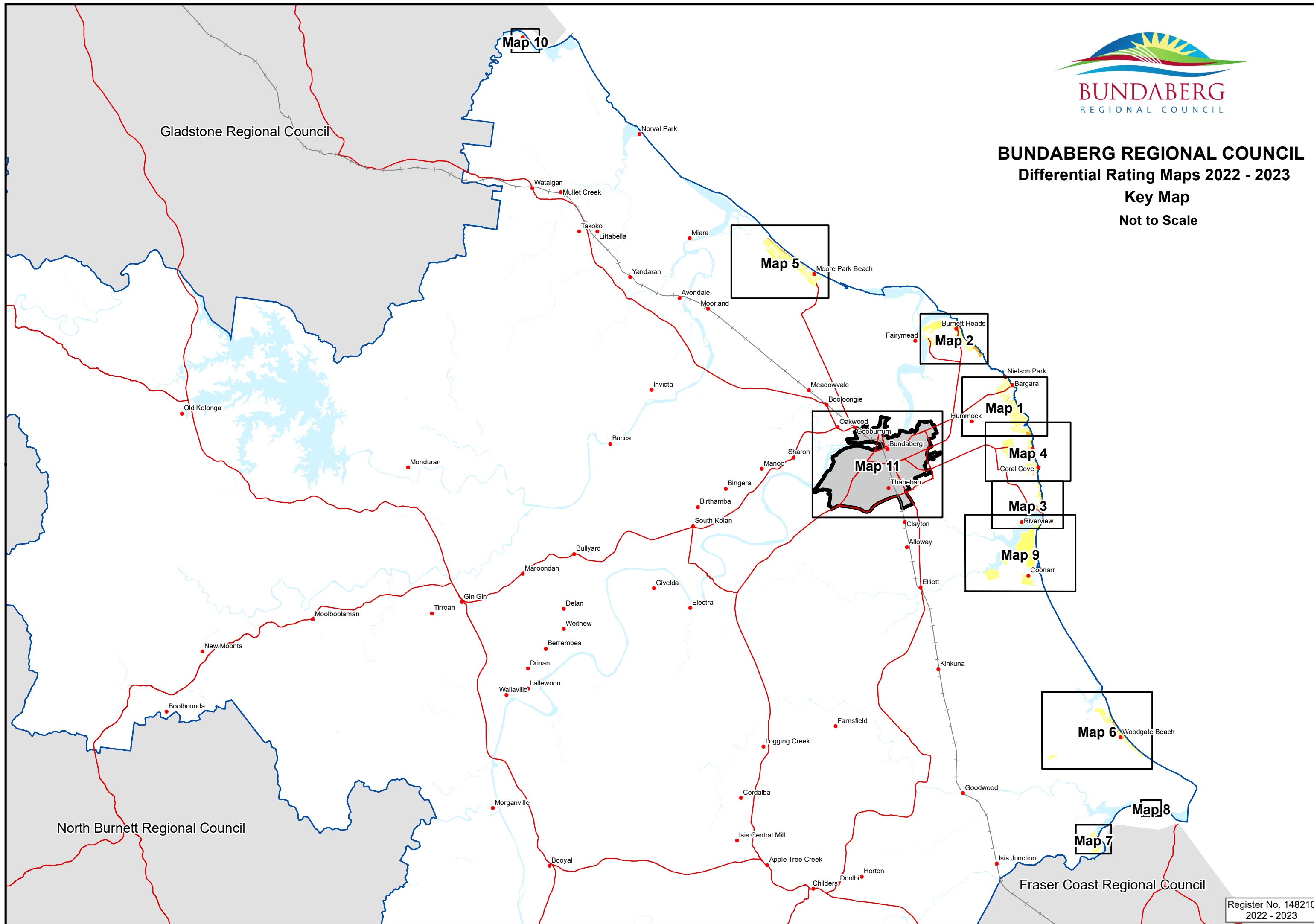




**BUNDABERG REGIONAL COUNCIL**  
**Differential Rating Maps 2022 - 2023**  
**Key Map**  
**Not to Scale**



# LEGEND

- 5 - Coastal Towns
- 7 - Urban Oceanfront

# DISCLAIMER

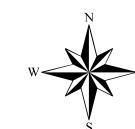
© The State of Queensland (Department of Environment and Resources Management) 2022. Based on Cadastral Data provided with the permission of the Department of Environment and Resource Management 2022. The information contained within this document is given without acceptance of responsibility for its accuracy. The Bundaberg Regional Council (and its officers, servants and agents), contract and agree to supply information only on that basis. The Department of Environment and Resource Management and the Bundaberg Regional Council gives no warranty in relation to the data (including accuracy, reliability, completeness or suitability) and accepts no liability (including without limitation, liability in negligence) for any loss, damage or costs (including consequential damage) relating to any use of the data.

# NOTES

For more detail and an up to date Service Area, see Councils Interactive Mapping Application via the following link:

[Interactive Mapping](#)

or scan the below QR Code:



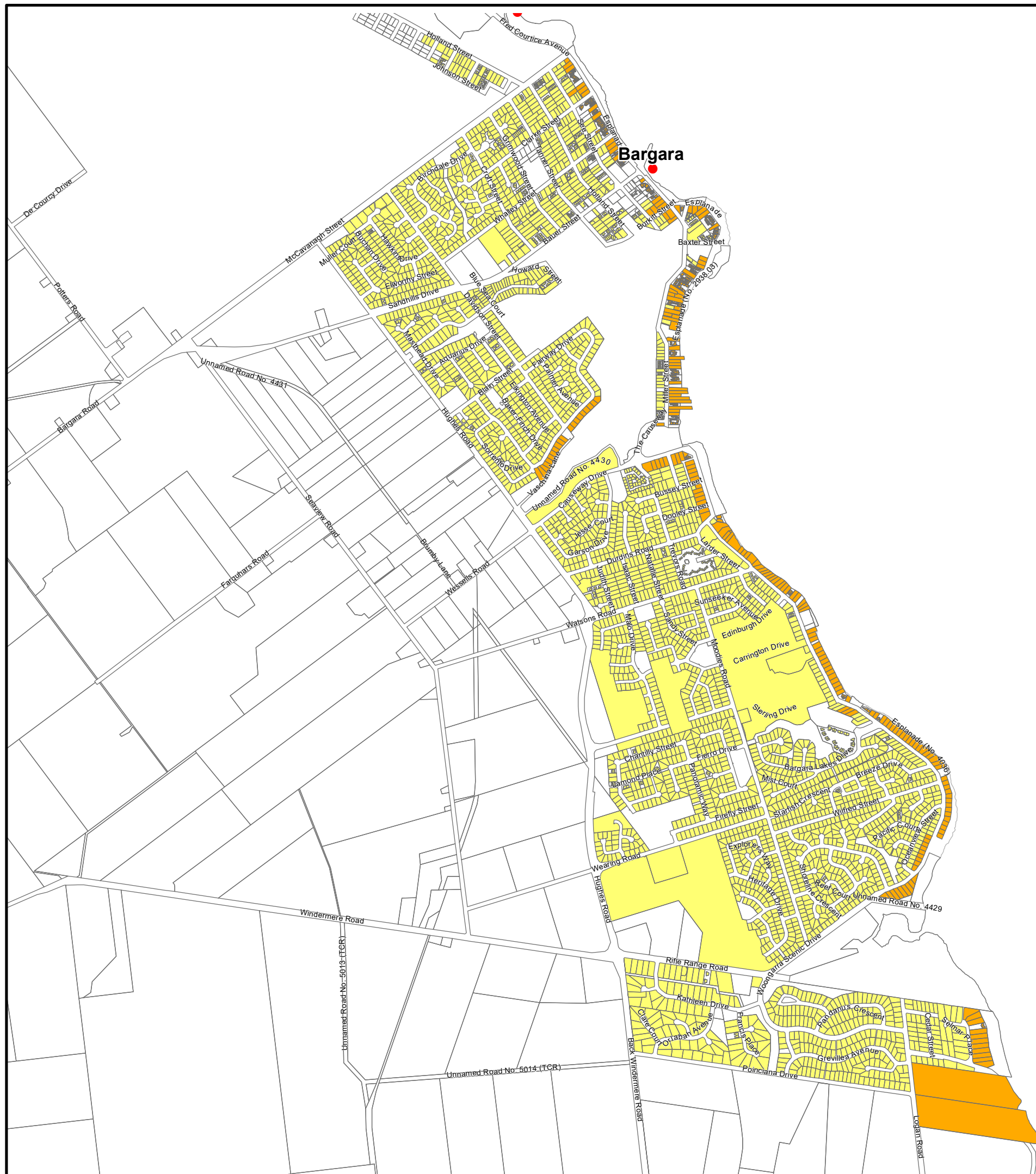
0 240 480 720 960  
Metres

Scale 1:20,000

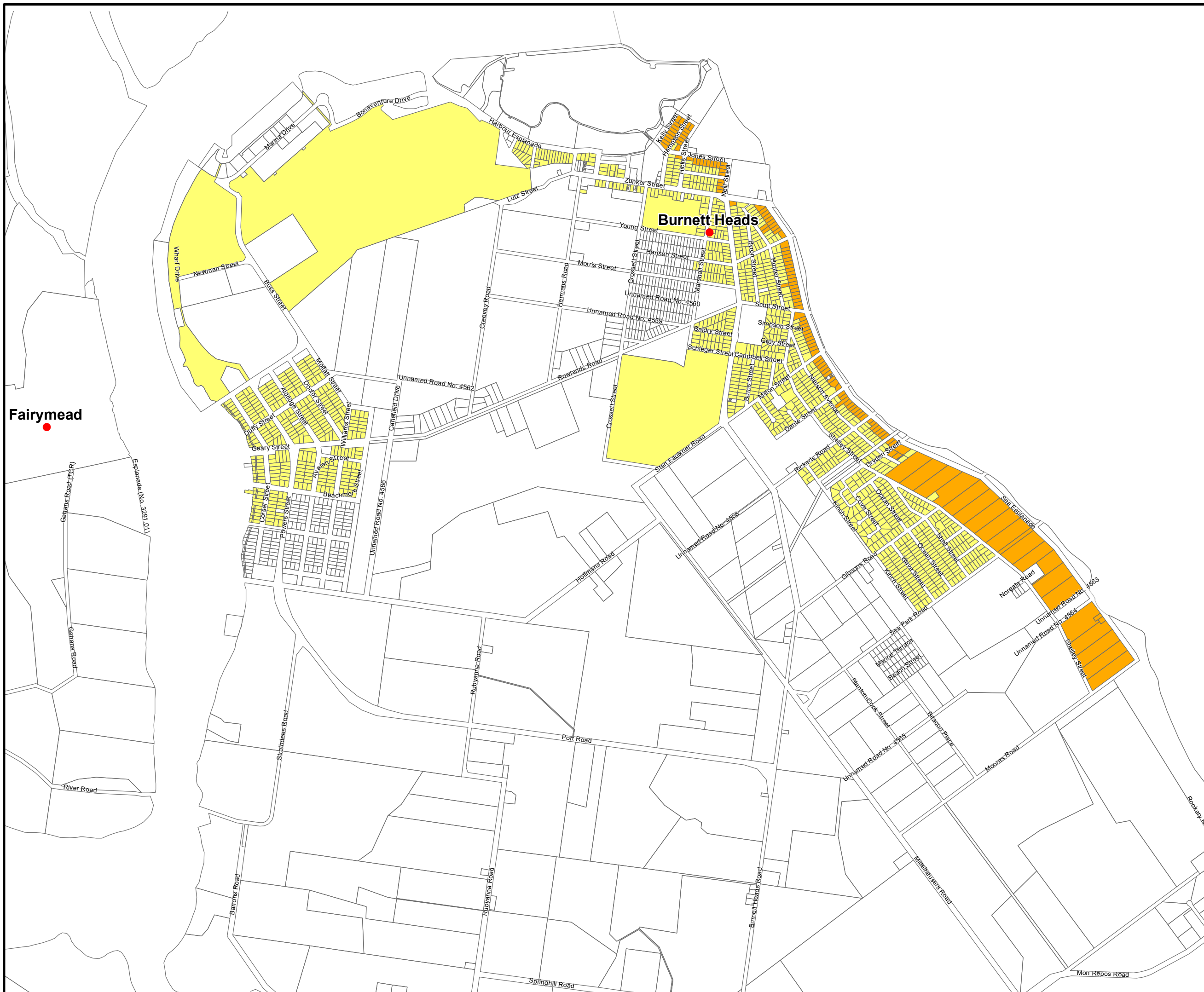
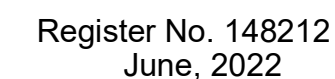
**DIFFERENTIAL  
RATING  
2022-2023**

**Map No. 1**

Register No. 148211  
June, 2022







#### LEGEND

- 5 - Coastal Towns
- 7 - Urban Oceanfront

#### DISCLAIMER

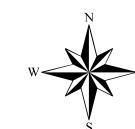
© The State of Queensland (Department of Environment and Resources Management) 2022. Based on Cadastral Data provided with the permission of the Department of Environment and Resource Management 2022. The information contained within this document is given without acceptance of responsibility for its accuracy. The Bundaberg Regional Council (and its officers, servants and agents), contract and agree to supply information only on that basis. The Department of Environment and Resource Management and the Bundaberg Regional Council gives no warranty in relation to the data (including accuracy, reliability, completeness or suitability) and accepts no liability (including without limitation, liability in negligence) for any loss, damage or costs (including consequential damage) relating to any use of the data.

#### NOTES

For more detail and an up to date Service Area, see Councils Interactive Mapping Application via the following link:

[Interactive Mapping](#)

or scan the below QR Code:



0 180 360 540 720  
Metres

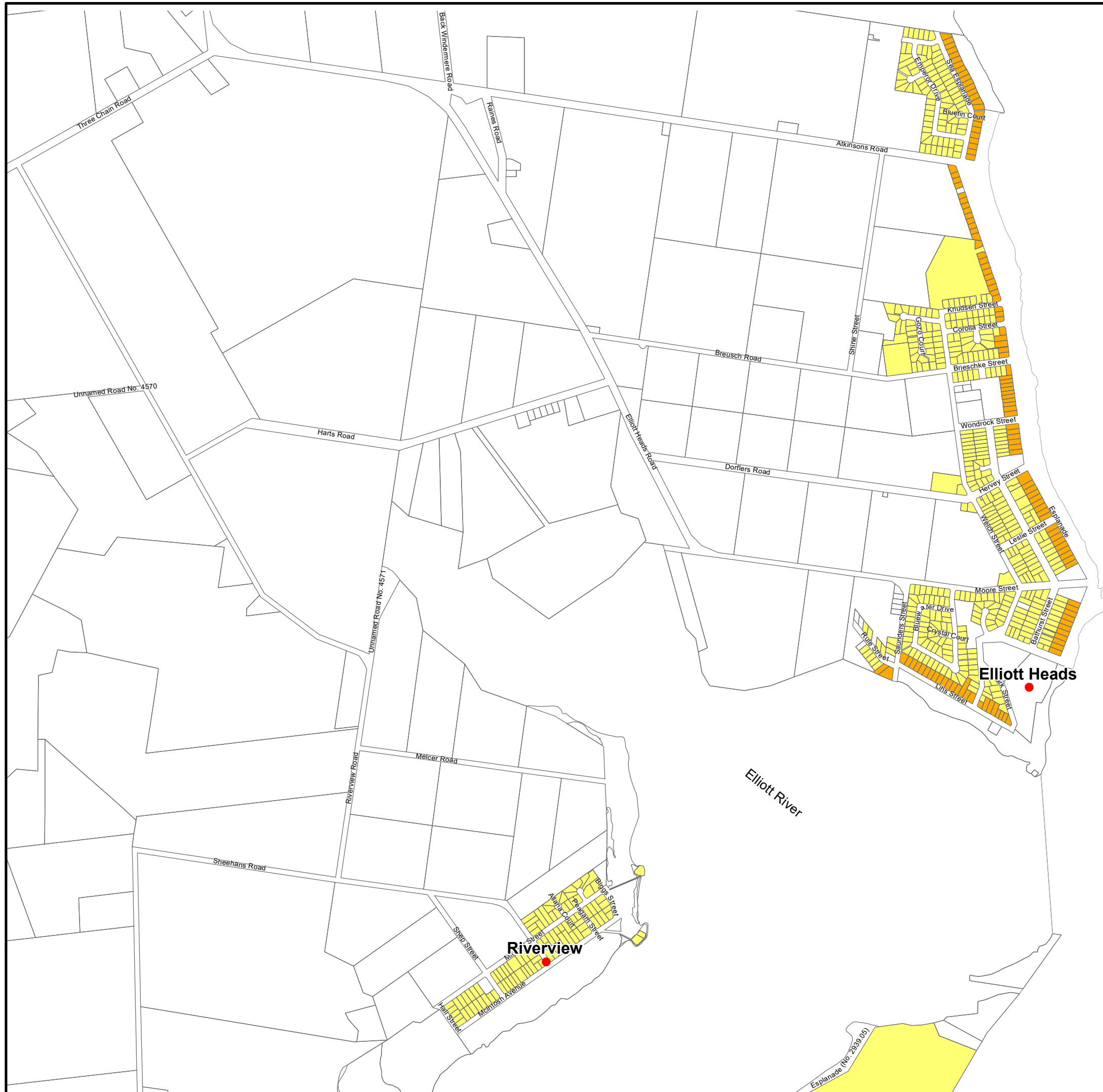
Scale 1:15,000

**DIFFERENTIAL  
RATING  
2022-2023**

**Map No. 3**

Register No. 148213

June, 2022





#### LEGEND

- 5 - Coastal Towns
- 7 - Urban Oceanfront

#### DISCLAIMER

© The State of Queensland (Department of Environment and Resources Management) 2022. Based on Cadastral Data provided with the permission of the Department of Environment and Resource Management 2022. The information contained within this document is given without acceptance of responsibility for its accuracy. The Bundaberg Regional Council (and its officers, servants and agents), contract and agree to supply information only on that basis. The Department of Environment and Resource Management and the Bundaberg Regional Council gives no warranty in relation to the data (including accuracy, reliability, completeness or suitability) and accepts no liability (including without limitation, liability in negligence) for any loss, damage or costs (including consequential damage) relating to any use of the data.

#### NOTES

For more detail and an up to date Service Area, see Councils Interactive Mapping Application via the following link:

[Interactive Mapping](#)

or scan the below QR Code:



0 150 300 450 600  
Metres

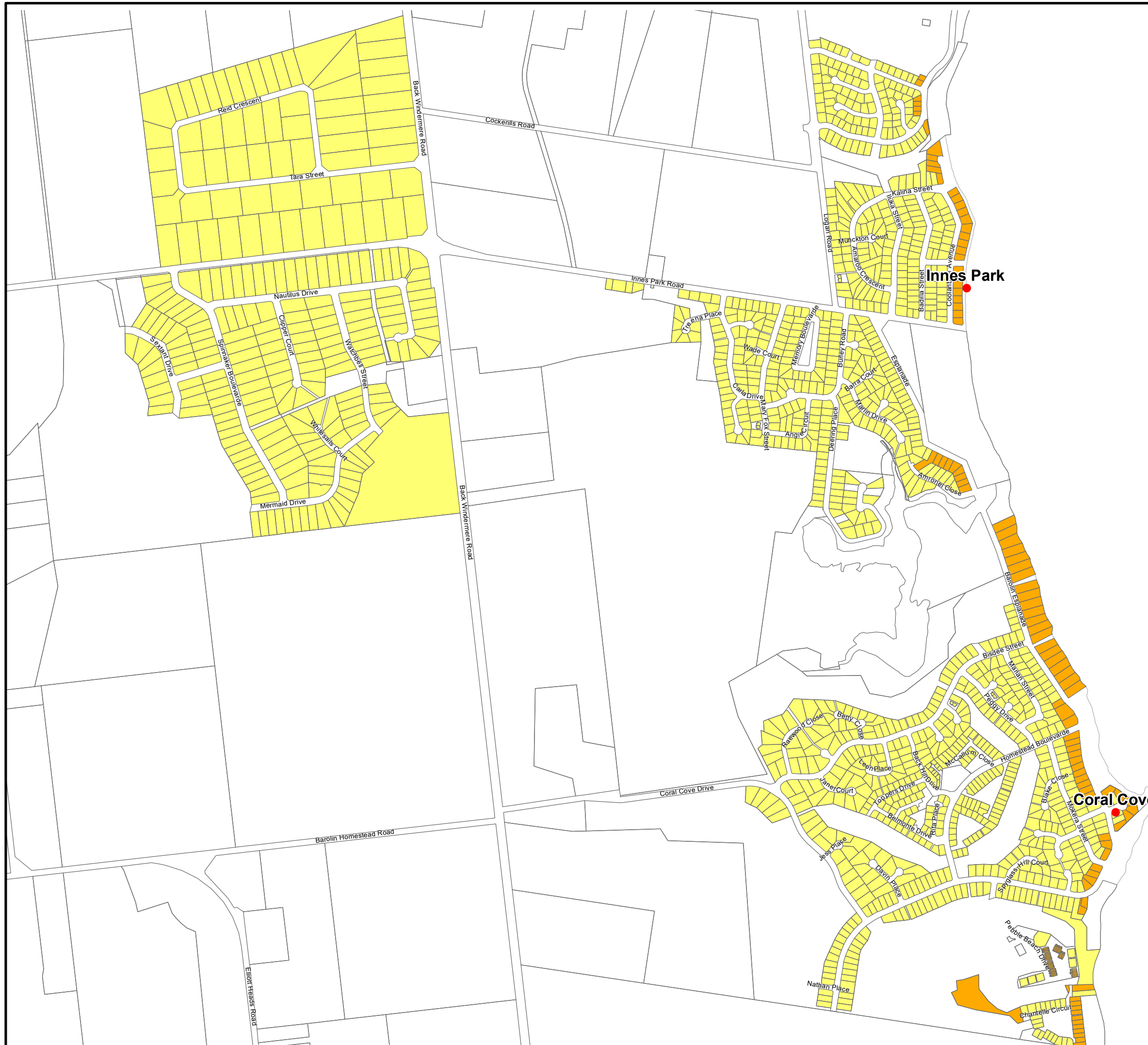
Scale 1:12,500

**DIFFERENTIAL  
RATING  
2022-2023**

**Map No. 4**

Register No. 148214

June, 2022



#### LEGEND

- 5 - Coastal Towns
- 7 - Urban Oceanfront

#### DISCLAIMER

© The State of Queensland (Department of Environment and Resources Management) 2022. Based on Cadastral Data provided with the permission of the Department of Environment and Resource Management 2022. The information contained within this document is given without acceptance of responsibility for its accuracy. The Bundaberg Regional Council (and its officers, servants and agents), contract and agree to supply information only on that basis. The Department of Environment and Resource Management and the Bundaberg Regional Council gives no warranty in relation to the data (including accuracy, reliability, completeness or suitability) and accepts no liability (including without limitation, liability in negligence) for any loss, damage or costs (including consequential damage) relating to any use of the data.

#### NOTES

For more detail and an up to date Service Area, see Councils Interactive Mapping Application via the following link:

[Interactive Mapping](#)

or scan the below QR Code:



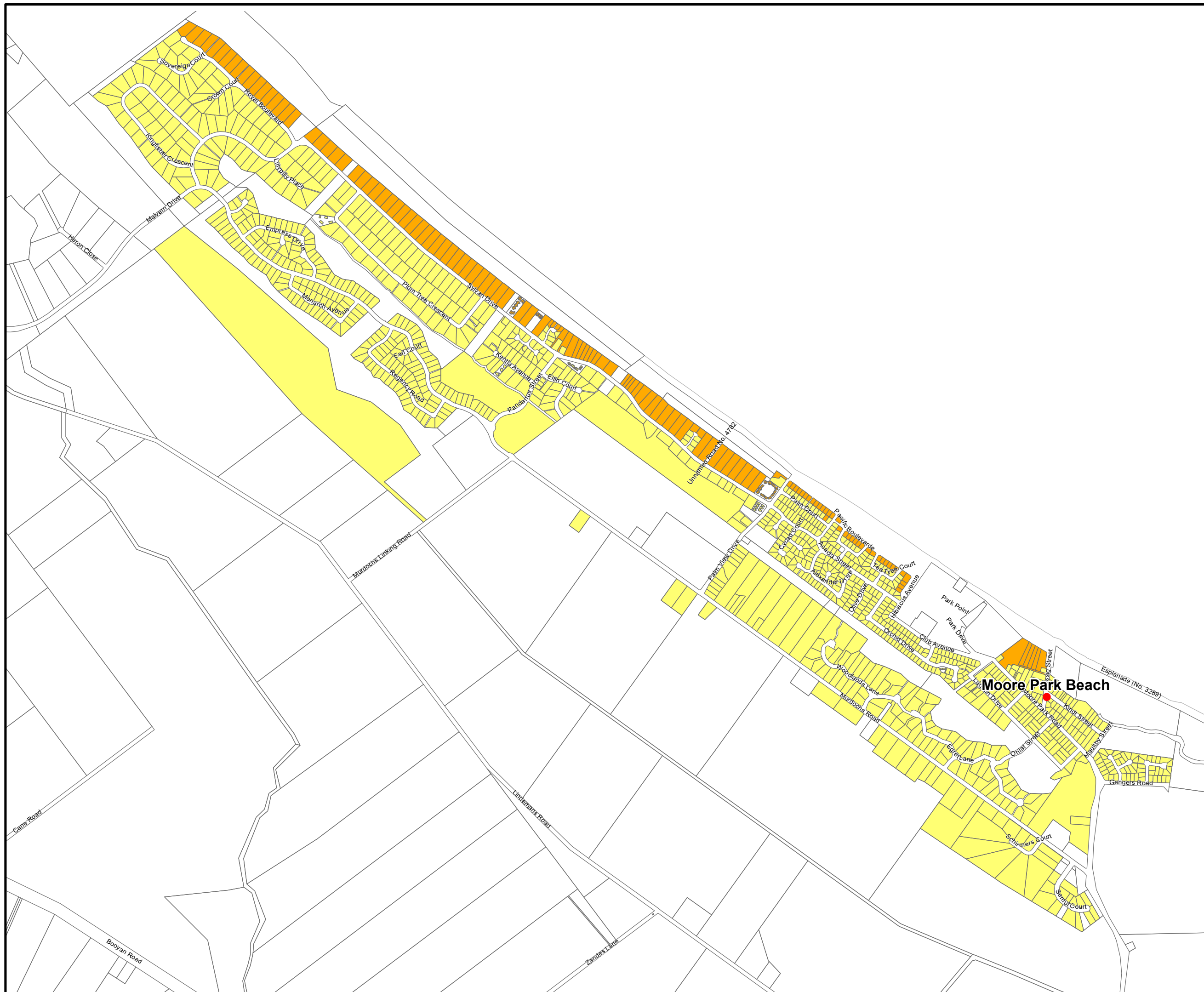
0 210 420 630 840  
Metres

Scale 1:17,500

**DIFFERENTIAL  
RATING  
2022-2023**

**Map No. 5**

Register No. 148215  
June, 2022



#### LEGEND

- 5 - Coastal Towns
- 7 - Urban Oceanfront

#### DISCLAIMER

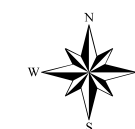
© The State of Queensland (Department of Environment and Resources Management) 2022. Based on Cadastral Data provided with the permission of the Department of Environment and Resource Management 2022. The information contained within this document is given without acceptance of responsibility for its accuracy. The Bundaberg Regional Council (and its officers, servants and agents), contract and agree to supply information only on that basis. The Department of Environment and Resource Management and the Bundaberg Regional Council gives no warranty in relation to the data (including accuracy, reliability, completeness or suitability) and accepts no liability (including without limitation, liability in negligence) for any loss, damage or costs (including consequential damage) relating to any use of the data.

#### NOTES

For more detail and an up to date Service Area, see Councils Interactive Mapping Application via the following link:

[Interactive Mapping](#)

or scan the below QR Code:



0 330 660 990 1,320  
Metres

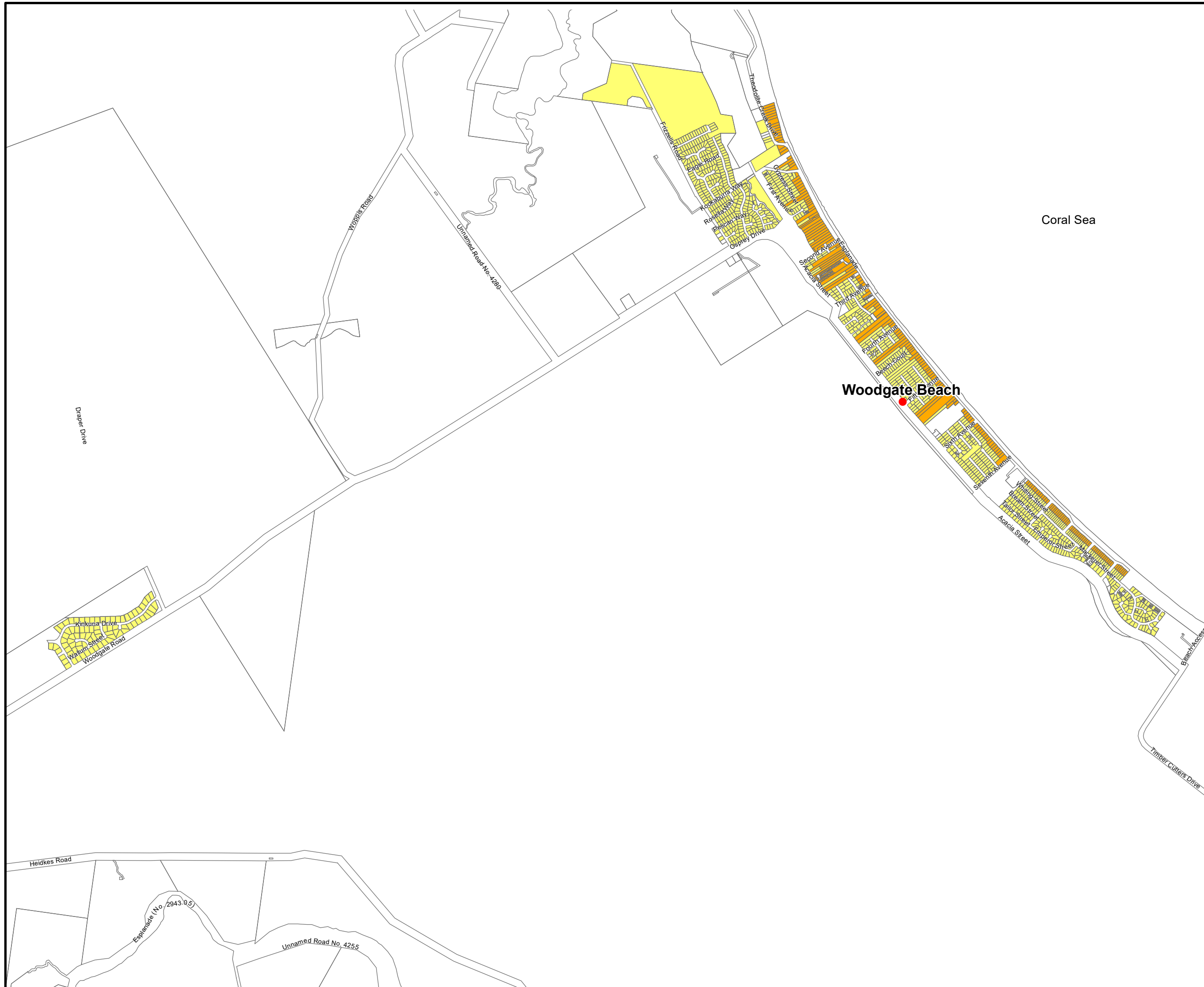
Scale 1:27,500

**DIFFERENTIAL  
RATING  
2022-2023**

**Map No. 6**

Register No. 148216

June, 2022





#### LEGEND

- 5 - Coastal Towns
- 7 - Urban Oceanfront

#### DISCLAIMER

© The State of Queensland (Department of Environment and Resources Management) 2022. Based on Cadastral Data provided with the permission of the Department of Environment and Resource Management 2022. The information contained within this document is given without acceptance of responsibility for its accuracy. The Bundaberg Regional Council (and its officers, servants and agents), contract and agree to supply information only on that basis. The Department of Environment and Resource Management and the Bundaberg Regional Council gives no warranty in relation to the data (including accuracy, reliability, completeness or suitability) and accepts no liability (including without limitation, liability in negligence) for any loss, damage or costs (including consequential damage) relating to any use of the data.

#### NOTES

For more detail and an up to date Service Area, see Councils Interactive Mapping Application via the following link:

[Interactive Mapping](#)

or scan the below QR Code:



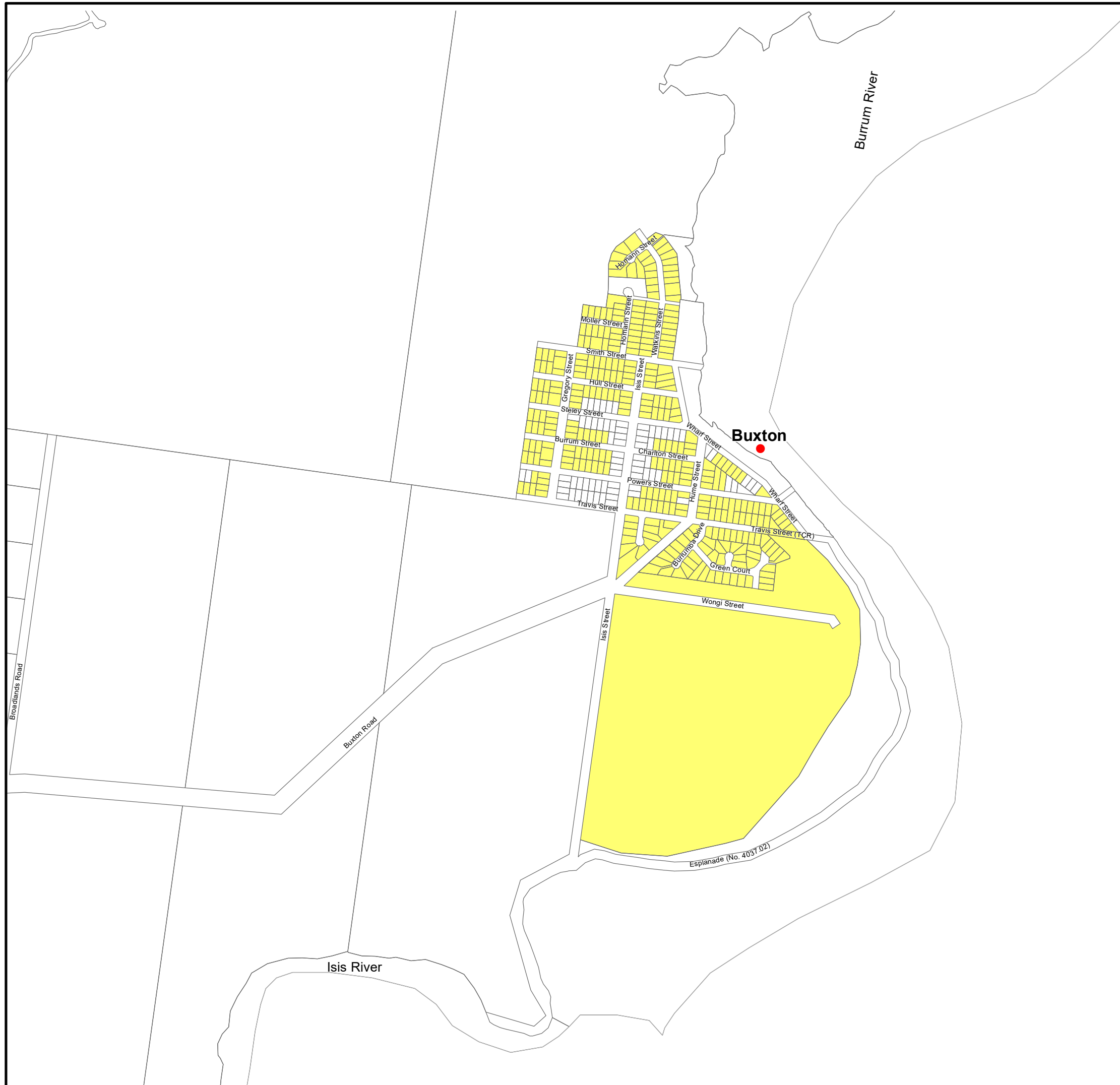
0 150 300 450 600  
Metres

Scale 1:12,500

**DIFFERENTIAL  
RATING  
2022-2023**

**Map No. 7**

Register No. 148217  
June, 2022





#### LEGEND

- 5 - Coastal Towns
- 7 - Urban Oceanfront

#### DISCLAIMER

© The State of Queensland (Department of Environment and Resources Management) 2022. Based on Cadastral Data provided with the permission of the Department of Environment and Resource Management 2022. The information contained within this document is given without acceptance of responsibility for its accuracy. The Bundaberg Regional Council (and its officers, servants and agents), contract and agree to supply information only on that basis. The Department of Environment and Resource Management and the Bundaberg Regional Council gives no warranty in relation to the data (including accuracy, reliability, completeness or suitability) and accepts no liability (including without limitation, liability in negligence) for any loss, damage or costs (including consequential damage) relating to any use of the data.

#### NOTES

For more detail and an up to date Service Area, see Councils Interactive Mapping Application via the following link:

[Interactive Mapping](#)

or scan the below QR Code:



0 60 120 180 240  
Metres

Scale 1:5,000

**DIFFERENTIAL  
RATING  
2022-2023**

**Map No. 8**

Register No. 148218  
June, 2022



#### LEGEND

- 5 - Coastal Towns
- 7 - Urban Oceanfront

#### DISCLAIMER

© The State of Queensland (Department of Environment and Resources Management) 2022. Based on Cadastral Data provided with the permission of the Department of Environment and Resource Management 2022. The information contained within this document is given without acceptance of responsibility for its accuracy. The Bundaberg Regional Council (and its officers, servants and agents), contract and agree to supply information only on that basis. The Department of Environment and Resource Management and the Bundaberg Regional Council gives no warranty in relation to the data (including accuracy, reliability, completeness or suitability) and accepts no liability (including without limitation, liability in negligence) for any loss, damage or costs (including consequential damage) relating to any use of the data.

#### NOTES

For more detail and an up to date Service Area, see Councils Interactive Mapping Application via the following link:

[Interactive Mapping](#)

or scan the below QR Code:



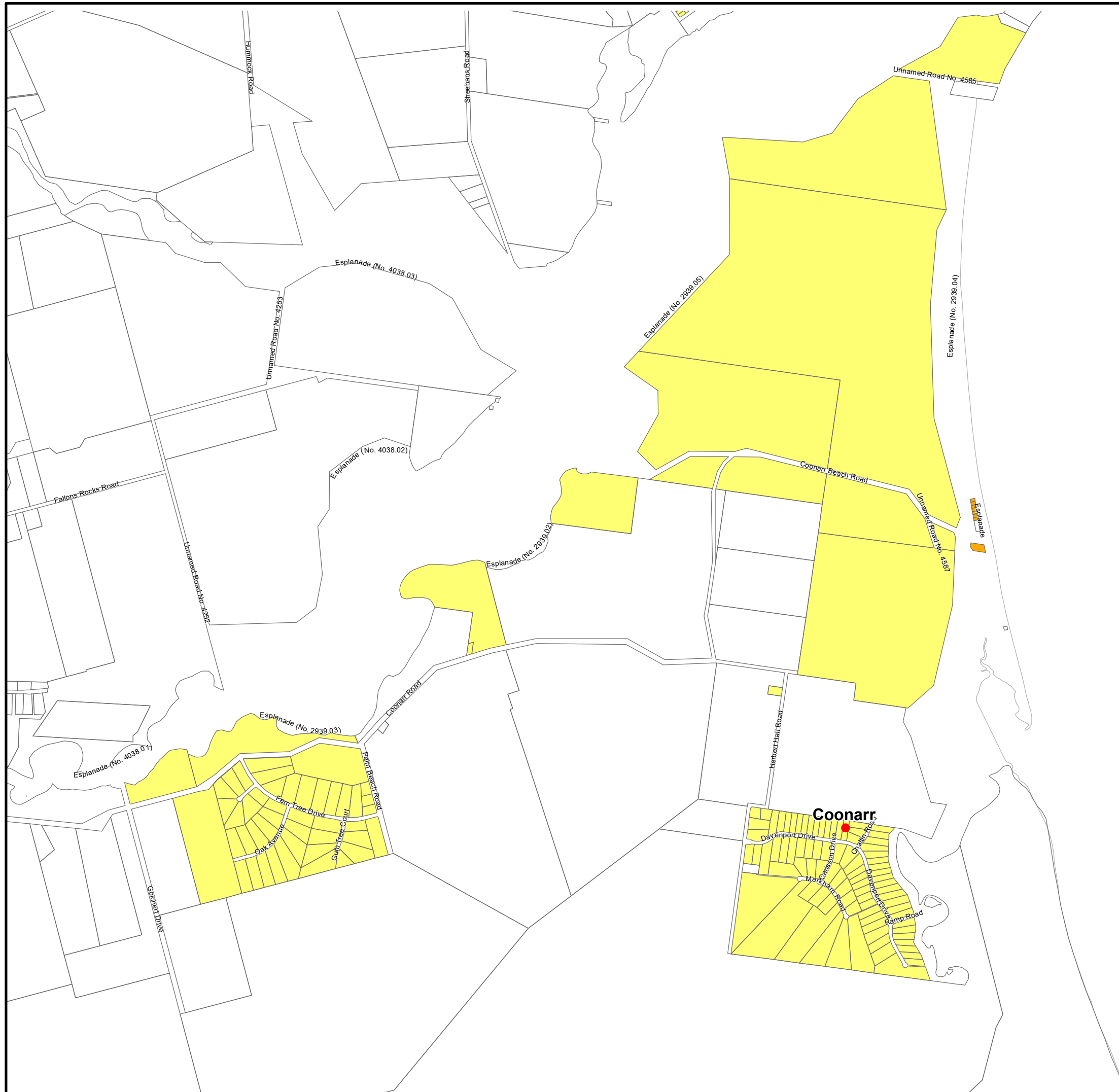
0 270 540 810 1,080  
Metres

Scale 1:22,500

**DIFFERENTIAL  
RATING  
2022-2023**

**Map No. 9**

Register No. 148219  
June, 2022



#### LEGEND

- 5 - Coastal Towns
- 7 - Urban Oceanfront

#### DISCLAIMER

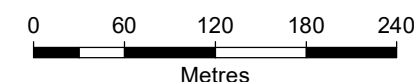
© The State of Queensland (Department of Environment and Resources Management) 2022. Based on Cadastral Data provided with the permission of the Department of Environment and Resource Management 2022. The information contained within this document is given without acceptance of responsibility for its accuracy. The Bundaberg Regional Council (and its officers, servants and agents), contract and agree to supply information only on that basis. The Department of Environment and Resource Management and the Bundaberg Regional Council gives no warranty in relation to the data (including accuracy, reliability, completeness or suitability) and accepts no liability (including without limitation, liability in negligence) for any loss, damage or costs (including consequential damage) relating to any use of the data.

#### NOTES

For more detail and an up to date Service Area, see Councils Interactive Mapping Application via the following link:

[Interactive Mapping](#)

or scan the below QR Code:

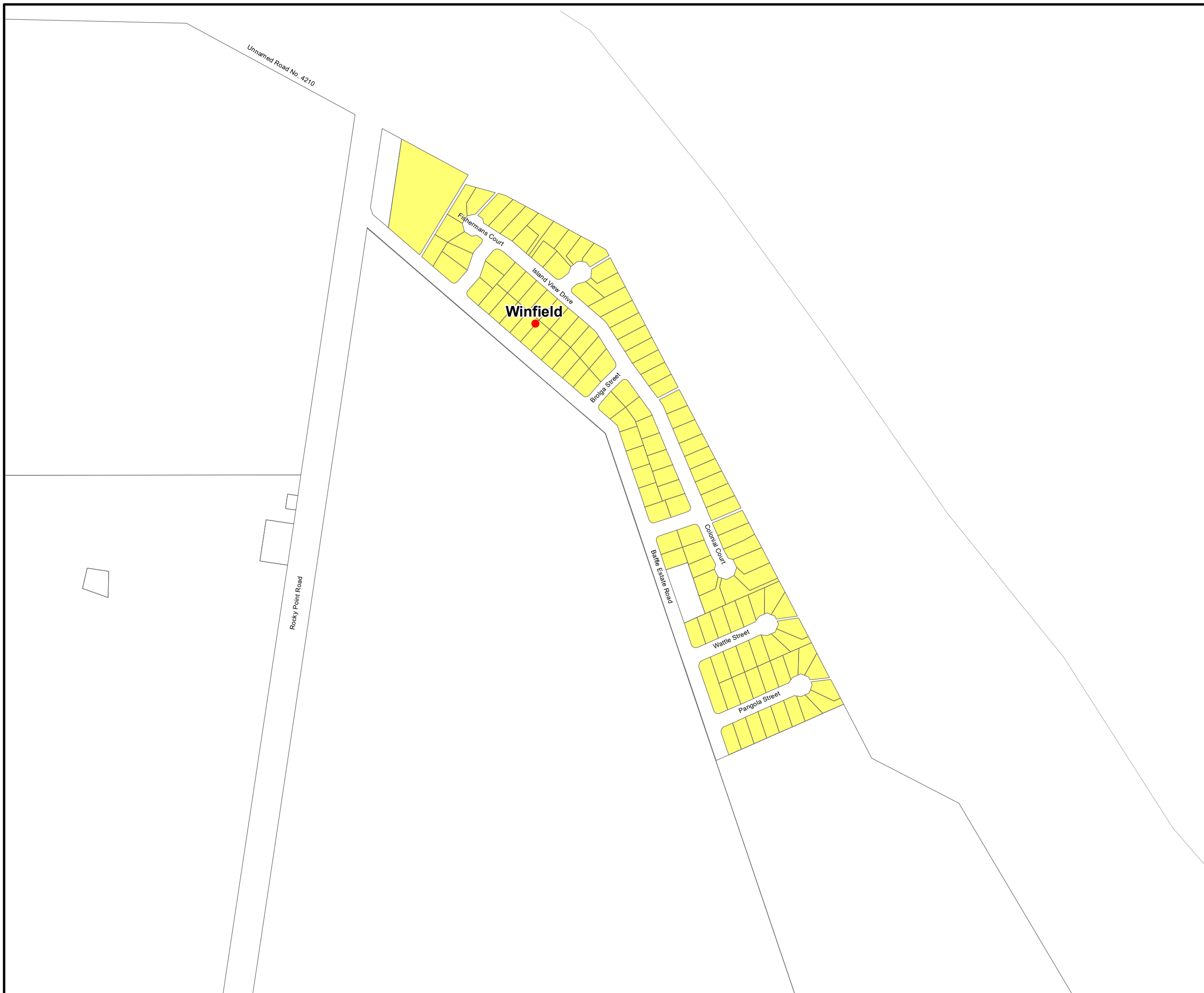


Scale 1:5,000

**DIFFERENTIAL  
RATING  
2022-2023**

**Map No. 10**

Register No. 148220  
June, 2022





#### LEGEND

 Bundaberg Commercial Area

#### DISCLAIMER

© The State of Queensland (Department of Environment and Resources Management) 2022. Based on Cadastral Data provided with the permission of the Department of Environment and Resource Management 2022. The information contained within this document is given without acceptance of responsibility for its accuracy. The Bundaberg Regional Council (and its officers, servants and agents), contract and agree to supply information only on that basis. The Department of Environment and Resource Management and the Bundaberg Regional Council gives no warranty in relation to the data (including accuracy, reliability, completeness or suitability) and accepts no liability (including without limitation, liability in negligence) for any loss, damage or costs (including consequential damage) relating to any use of the data.

#### NOTES

For more detail and an up to date Service Area, see Councils Interactive Mapping Application via the following link:

[Interactive Mapping](#)

or scan the below QR Code:



0 420 840 1,260 1,680  
Metres

Scale 1:35,000

**DIFFERENTIAL  
RATING  
2022-2023**

**Map No. 11**

Register No. 148221  
June, 2022

